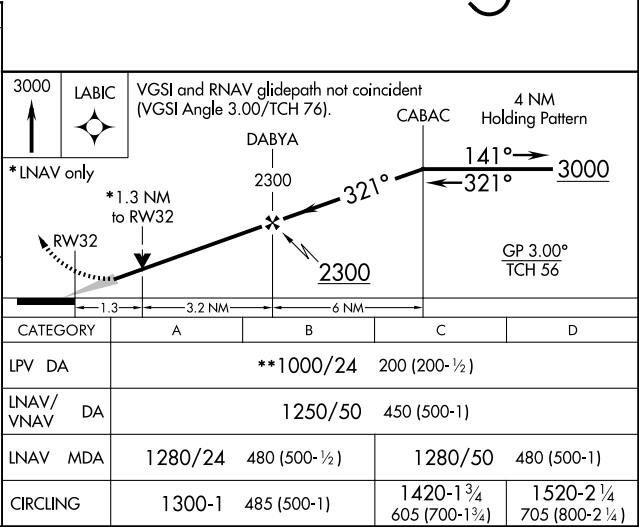
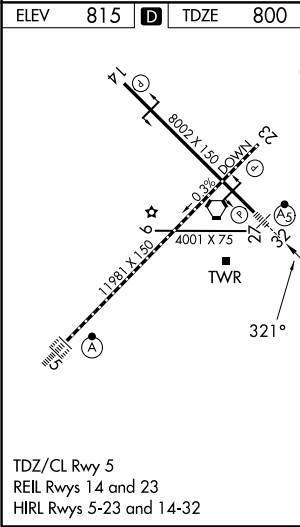
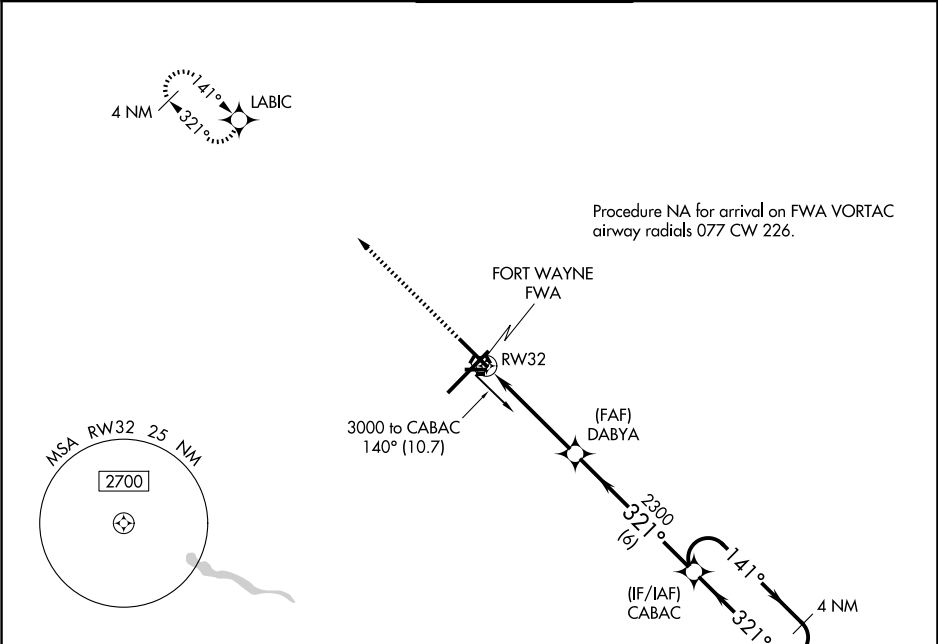


WAAS CH <b>82417</b> <b>W32A</b>	APP CRS <b>321°</b>	Rwy Ldg TDZE Apt Elev	<b>8001</b> <b>800</b> <b>815</b>
----------------------------------------	------------------------	-----------------------------	-----------------------------------------

RNAV (GPS) RWY 32

FORT WAYNE INTL (FWA)

<div><div><div><div><div></div><div></div></div><div></div></div><div>ASR</div></div><div>For uncompensated Baro-VNAV systems, LNAV/VNAV NA below -16°C (4°F) or above 47°C (116°F). DME/DME RNP-0.3 NA. ** RVR 1800 authorized with use of FD or AP or HUD to DA.</div></div>	<div><div><div><div><div></div><div></div></div><div></div></div><div>MALSR</div><div><div><div><div></div><div></div><div></div></div><div>AS</div></div></div></div></div>	<div>MISSED APPROACH: Climb to 3000 direct LABIC and hold.</div>		
<div>ATIS <b>121.25 360.825</b></div>	<div>FORT WAYNE APP CON <b>127.2 284.6</b></div>	<div>FORT WAYNE TOWER <b>119.1 269.325</b></div>	<div>GND CON <b>121.9 348.6</b></div>	<div>CLNC DEL <b>124.75</b></div>



EC-2, 07 AUG 2025 to 04 SEP 2025

EC-2, 07 AUG 2025 to 04 SEP 2025