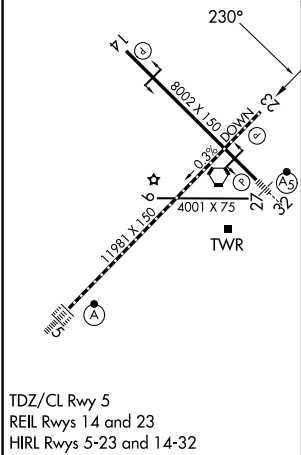
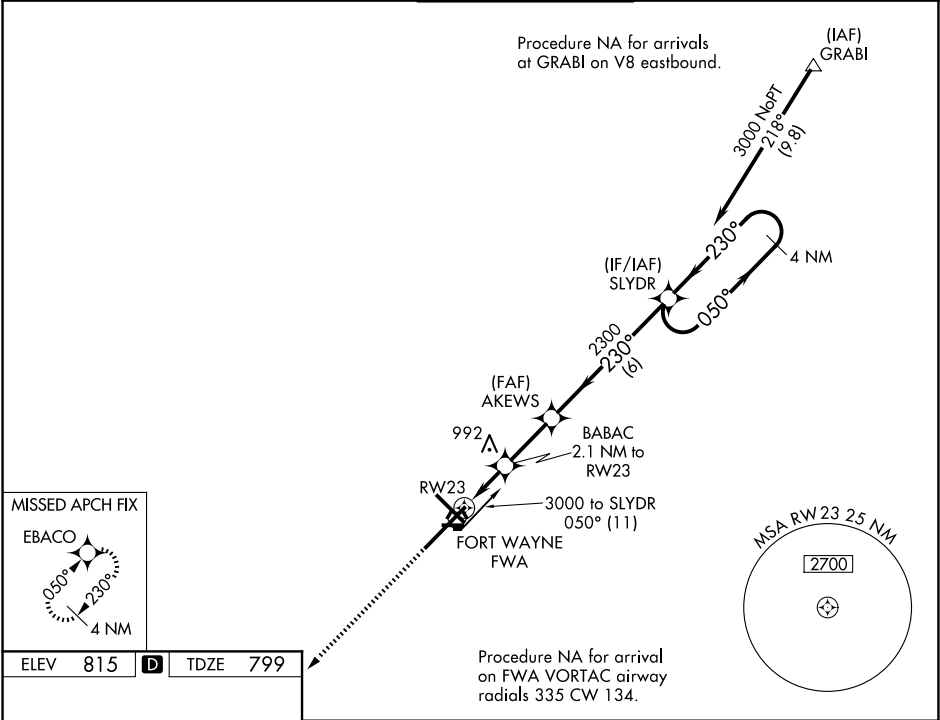
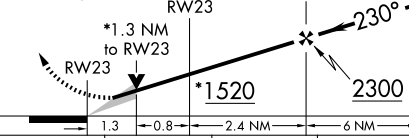


WAAS CH 69599 W23A	APP CRS 230°	Rwy Ldg 11981 TDZE 799 Apt Elev 815
--	------------------------	--

RNAV (GPS) RWY 23
FORT WAYNE INTL (FWA)

<div><div><div></div><div>ASR</div></div><div>For uncompensated Baro-VNAV systems, LNAV/VNAV NA below -16°C (4°F) or above 47°C (116°F). DME/DME RNP-0.3 NA.</div></div>			MISSED APPROACH: Climb to 3000 direct EBACO and hold.	
ATIS 121.25 360.825	FORT WAYNE APP CON 127.2 284.6	FORT WAYNE TOWER 119.1 269.325	GND CON 121.9 348.6	CLNC DEL 124.75



3000 ↑ EBACO		VGSI and RNAV glidepath not coincident (VGSI Angle 3.00/TCH 76).			4 NM Holding Pattern	
*LNAV only.		BABAC 2.1 NM to RW23		AWKES 2300	SLYDR	
		*1.3 NM to RW23		*1520	2300	GP 3.00° TCH 55
CATEGORY	A	B	C	D	E	
LPV DA	1053/40 254 (300-¾)					
LNAV/ VNAV DA	1230-1⅜ 431 (500-1⅝)					
LNAV MDA	1300/55 501 (500-1)			1300-1⅜ 501 (500-1⅝)		
CIRCLING	1300-1 485 (500-1)		1420-1¾ 605 (700-1¾)	1520-2¼ 705 (800-2¼)	1520-2½ 705 (800-2½)	