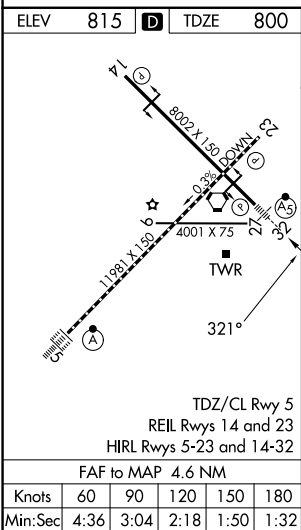
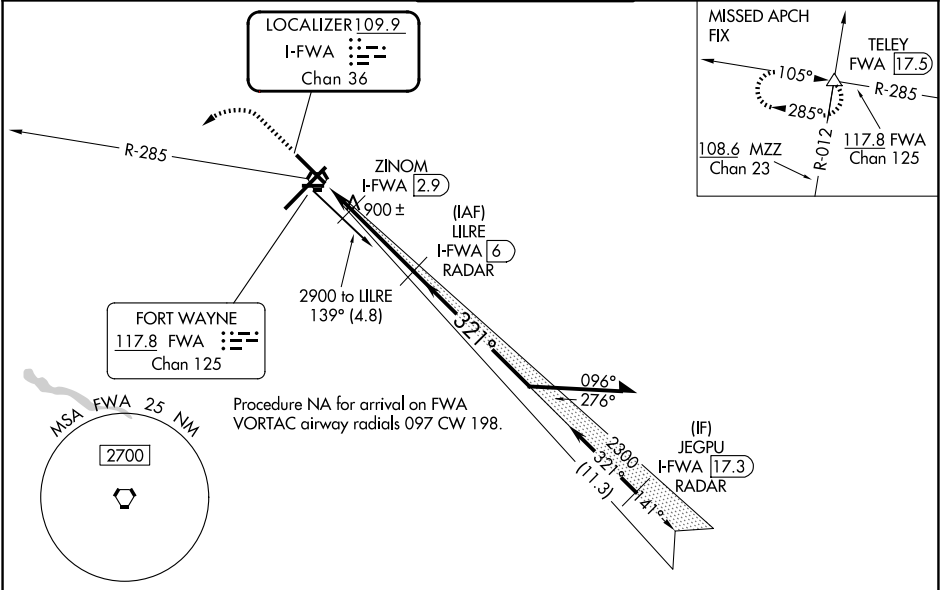


LOC/DME I-FWA 109.9 Chan 36	APP CRS 321°	Rwy Ldg TDZE Apt Elev	8001 800 815
-------------------------------------------------	------------------------	-----------------------------	-----------------------------------------

ILS or LOC RWY 32
 FORT WAYNE INTL (FWA)

DME required for LOC only. DME or RADAR required for procedure entry.		<div>MALSR</div>	MISSED APPROACH: Climb to 3000 then left turn on FWA VORTAC R-285 to TELEY INT/FWA 17.5 DME and hold.
<div>⚠</div> For inop ALS, increase S-ILS 32 visibility Cat E to RVR 4000 and increase S-LOC 32 visibility Cats C, D, and E to RVR 5500.	<div>⚠</div> ASR * RVR 1800 authorized with use of FD or AP or HUD to DA.		

ATIS 121.25 360.825	FORT WAYNE APP CON 127.2 284.6	FORT WAYNE TOWER 119.1 269.325	GND CON 121.9 348.6	CLNC DEL 124.75
-------------------------------	------------------------------------------	------------------------------------------	-------------------------------	---------------------------



Cat E Procedure Turn NA.					
<div>3000</div> <div>FWA R-285</div> <div>TELEY</div>		<div>VGSI and ILS glidepath not coincident (VGSI Angle 3.00°/TCH 76°).</div> <div>Remain within 10 NM</div> <div>141° 321° 2500</div> <div>GS 3.00° TCH 56</div>			
<div>Use I-FWA DME when on the localizer course.</div> <div>I-FWA 1.5</div> <div>ZINOM I-FWA 2.9</div>		<div>1.4 NM 3.2 NM</div>			
CATEGORY	A	B	C	D	E
S-ILS 32*	1000/24 200 (200-½)				
S-LOC 32	1160/24	360 (400-½)	1160/30	360 (400-¾)	
CIRCLING	1300-1	485 (500-1)	1420-1¾ 605 (700-1¾)	1520-2¼ 705 (800-2¼)	1520-2½ 705 (800-2½)