

RNAV (GPS) RWY 4

APCH CRS	Rwy Idg
044°	4503
TDZE	1066
Arpt Elev	1066

[USA]

MARSHALL AAF (KFRI)

RNP APCH - GPS

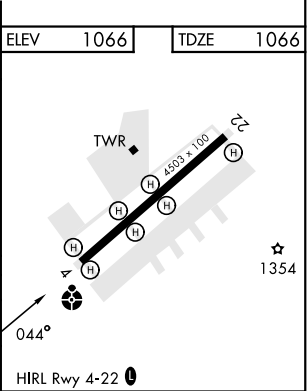
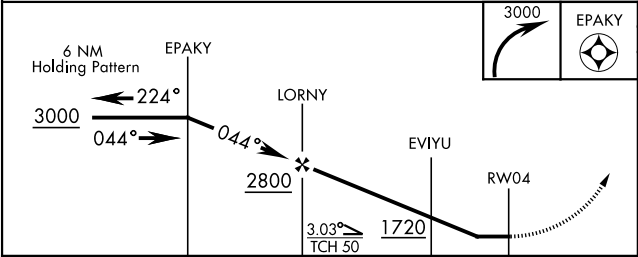
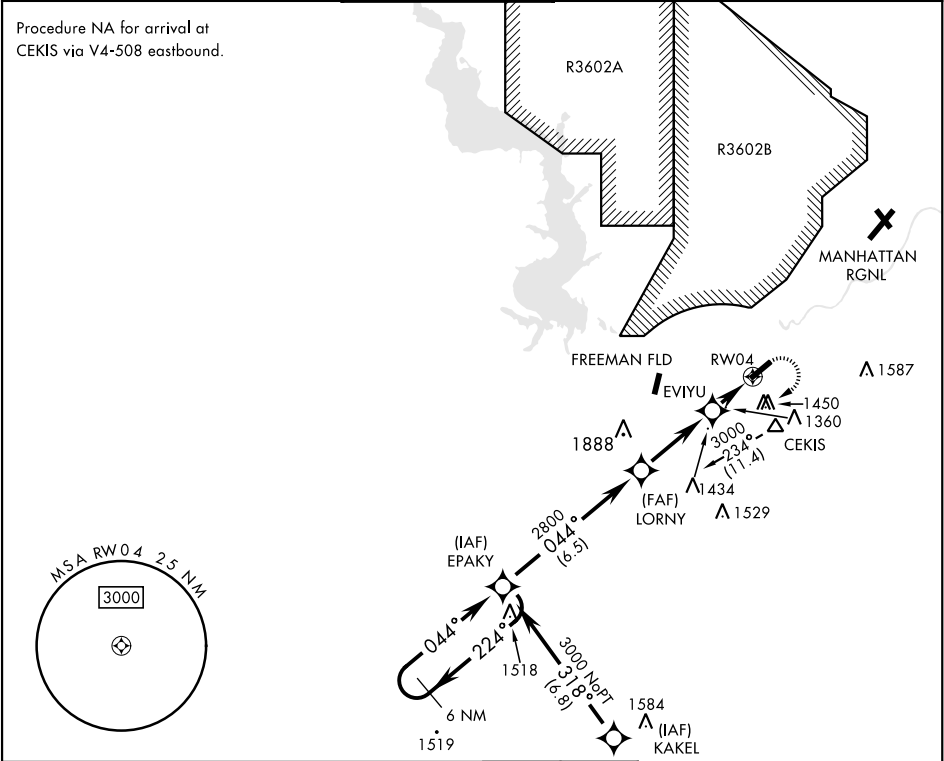


MISSED APPROACH: Climbing right turn to 3000 direct EPAKY and hold.

- When ALS inop increase CAT CD vis to 1 3/4 miles.
- Circling not authorized NW of Rwy 4-22.
- NA Visibility reduction by helicopters NA

ATIS *	APP CON	TOWER *	GND CON	CLNC DEL	ASR/PAR
121.025	121.25 269.05	126.2 (CTAF) 0 248.65	140.20 229.4	119.65	

Procedure NA for arrival at CEKIS via V4-508 eastbound.



CATEGORY	A	B	C	D
LNAV MDA *	1660-1 594 (600-1)	1660-1 594 (600-1)	1660-1 594 (600-1)	1660-1 594 (600-1)
CIRCLING **	1700-1 634 (700-1)	1760-1 694 (700-1)	1760-2 694 (700-2)	1900-2 834 (900-2)

RNAV (GPS) RWY 4

NC-2, 07 AUG 2025 to 04 SEP 2025

NC-2, 07 AUG 2025 to 04 SEP 2025