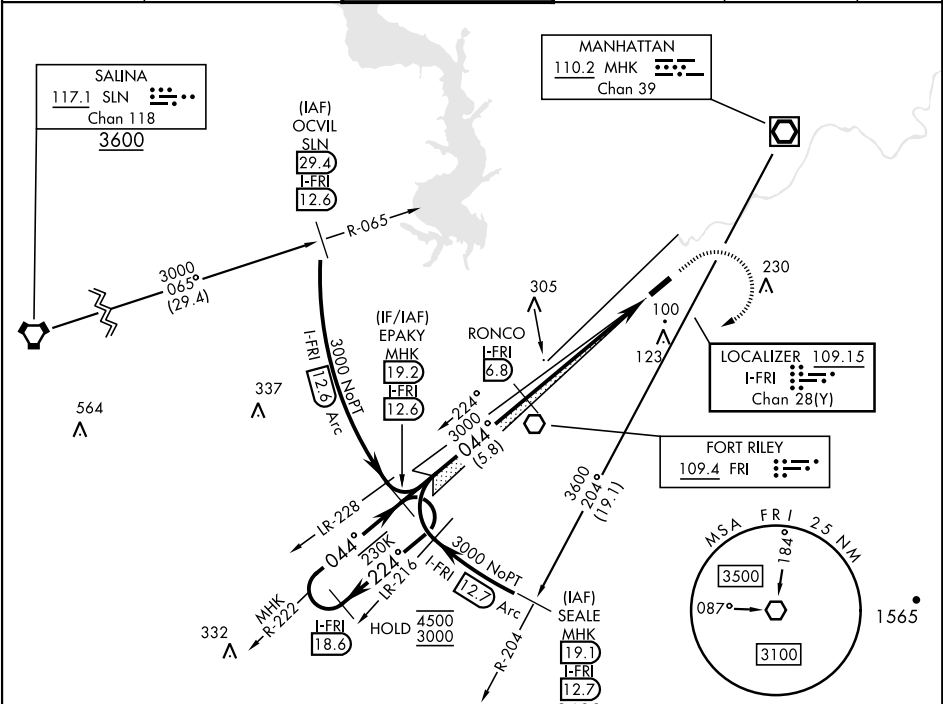


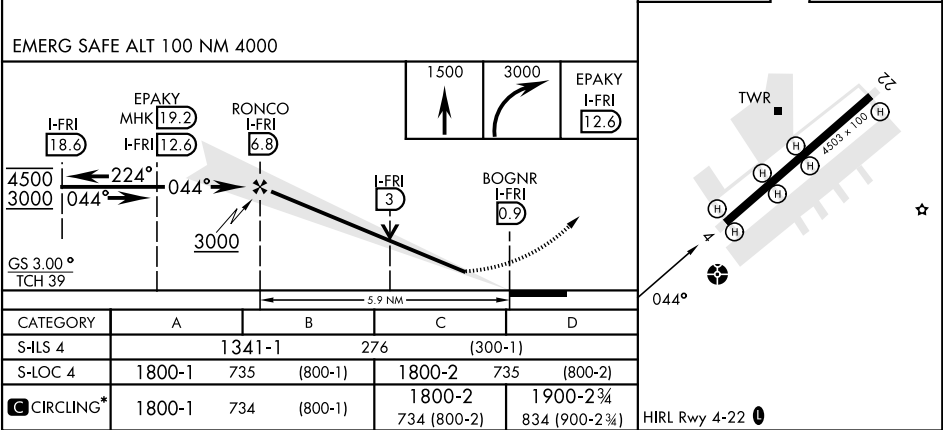
ILS or LOC RWY 4

LOC/DME I-FRI 109.15 Chan 28(Y)	APCH CRS 044°	Rwy Idg THRE 1065 Arpt Elev 1066	[USA]	MARSHALL AAF (KFRI)	
RADAR required			ODALS	MISSED APPROACH: Climb to 1500 then climbing right turn to 3000 heading 230° expect radar vectors to EPAKY and hold.	
▼ * Circling not authorized NW of Rwy 4-22. Rwy 4 helicopter visibility reduction below ¾ mile not authorized.					

ATIS ★ 121.025	APP CON 121.25 269.05	TOWER ★ 126.2 (CTAF) 0 248.65	GND CON 140.20 229.4	CLNC DEL 119.65	ASR/PAR
--------------------------	---------------------------------	-----------------------------------------	--------------------------------	---------------------------	---------



ELEV	1066	THRE	1065
------	------	------	------



PORT RILEY, KANSAS	39° 03' N - 96° 46' E	MARSHALL AAF (KFRI)
Orig 20FEB25		

ILS or LOC RWY 4

NC-2, 07 AUG 2025 to 04 SEP 2025

NC-2, 07 AUG 2025 to 04 SEP 2025