

VORTAC RSW	APP CRS	Rwy Ldg
114.15	129°	4296
Chan 88(Y)		TDZE 15
		Apt Elev 17

VOR RWY 13

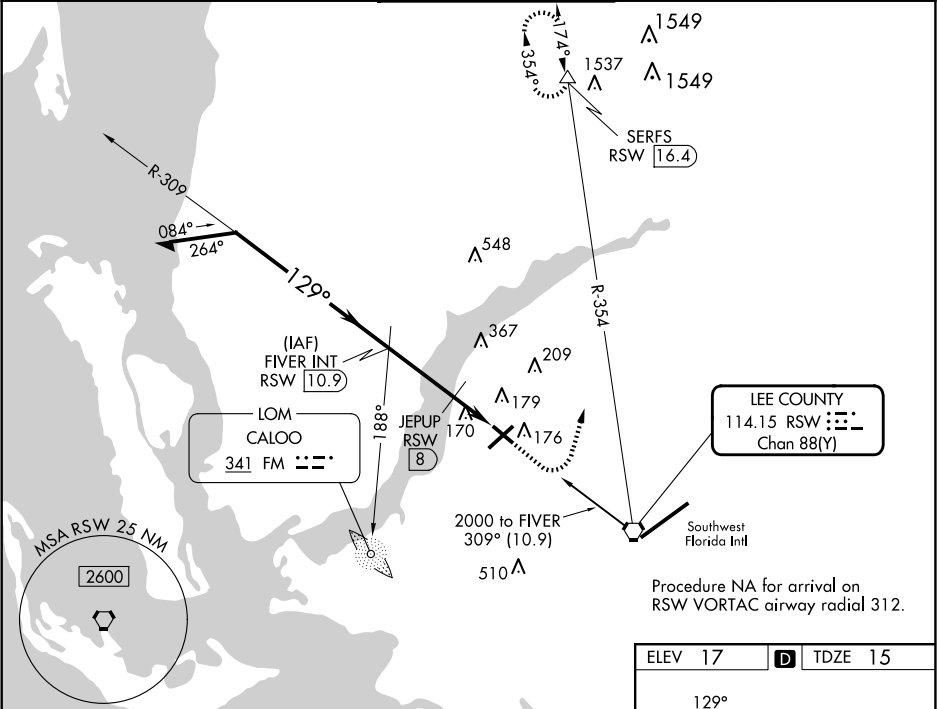
PAGE FLD (FMY)

DME required.

When Circling to Rwy 31 at night, operational VGSI required, remain on or above VGSI glidepath until threshold.

MISSED APPROACH: Climb to 1000 then climbing left turn to 2600 on RSW VORTAC R-354 to SERFS/RSW 16.4 DME and hold.

ATIS	FORT MYERS APP CON ★	PAGE TOWER ★	GND CON	CLNC DEL
123.725	125.15 306.2 (Rwys 5, 13) 126.8 306.2 (Rwys 23, 31)	119.0 (CTAF) 0 306.95	121.7	121.7



Remain within 10 NM		FIVER INT RSW 10.9	1000	2600	SERFS
2000		309°	129°	1600	
		3.05° TCH 32	620	JEPUP RSW 8	RSW 7.5
		2.9 NM	0.5	1.4 NM	RSW 6.1
CATEGORY	A	B	C	D	
S-13	620-1	605 (700-1)	620-1 3/4	605 (700-1 3/4)	
CIRCLING	620-1	603 (700-1)	620-1 3/4 603 (700-1 3/4)	680-2 663 (700-2)	
JEPUP FIX MINIMUMS					
S-13	480-1	465 (500-1)	480-1 3/8	465 (500-1 3/8)	
CIRCLING	540-1	523 (600-1)	600-1 1/2 583 (600-1 1/2)	680-2 663 (700-2)	

ELEV 17

TDZE 15

129°

13

12

11

10

9

8

7

6

5

4

3

2

1

TWR

6400 X 150

4810 X 150

REIL Rwys 5, 13, 23 and 31

MIRL Rwy 5-23 and 13-31

FAF to MAP 4.8 NM

Knots	60	90	120	150	180
Min:Sec	4:48	3:12	2:24	1:55	1:36