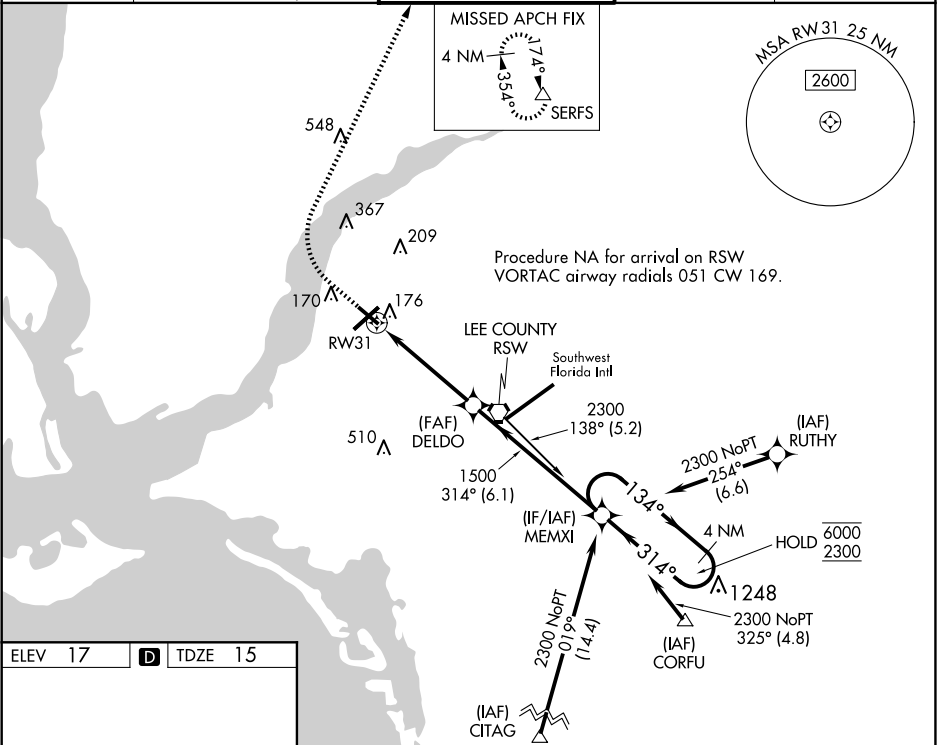


WAAS CH 50524 W31A	APP CRS 314°	Rwy Ldg 4705 TDZE 15 Apt Elev 17
--	------------------------	---

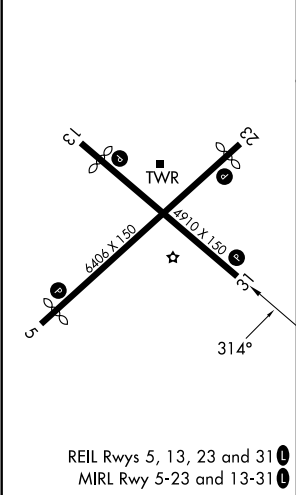
RNAV (GPS) RWY 31
PAGE FLD (FMY)

RNP APCH.
▼ Rwy 31 helicopter visibility reduction below 1 SM NA. For uncompensated Baro-VNAV systems, LNAV/VNAV NA below 4°C or above 54°C. Straight-in Rwy 31 at night, Circling Rwy 31 at night, operational VGSI required, remain on or above VGSI glidepath until threshold.
MISSED APPROACH: Climb to 500 then climbing right turn to 2600 direct SERFS and hold.

ATIS 123.725	FORT MYERS APP CON ★ 125.15 306.2 (Rwys 5, 13) 126.8 306.2 (Rwys 23, 31)	PAGE TOWER ★ 119.0 (CTAF) 0 306.95	GND CON 121.7	CLNC DEL 121.7
------------------------	--	---	-------------------------	--------------------------



ELEV 17	D	TDZE 15
---------	---	---------



500	2600	SERFS	MEMXI	4 NM Holding Pattern
↑	↷	△		
CATEGORY	A	B	C	D
LPV DA	265-1		250 (300-1)	
LNAV/VNAV DA	377-1		362 (400-1)	
LNAV MDA	480-1 465 (500-1)		480-1 465 (500-1)	
CIRCLING	540-1 523 (600-1)		600-1 583 (600-1) 680-2 663 (700-2)	

SE-3, 07 AUG 2025 to 04 SEP 2025

SE-3, 07 AUG 2025 to 04 SEP 2025