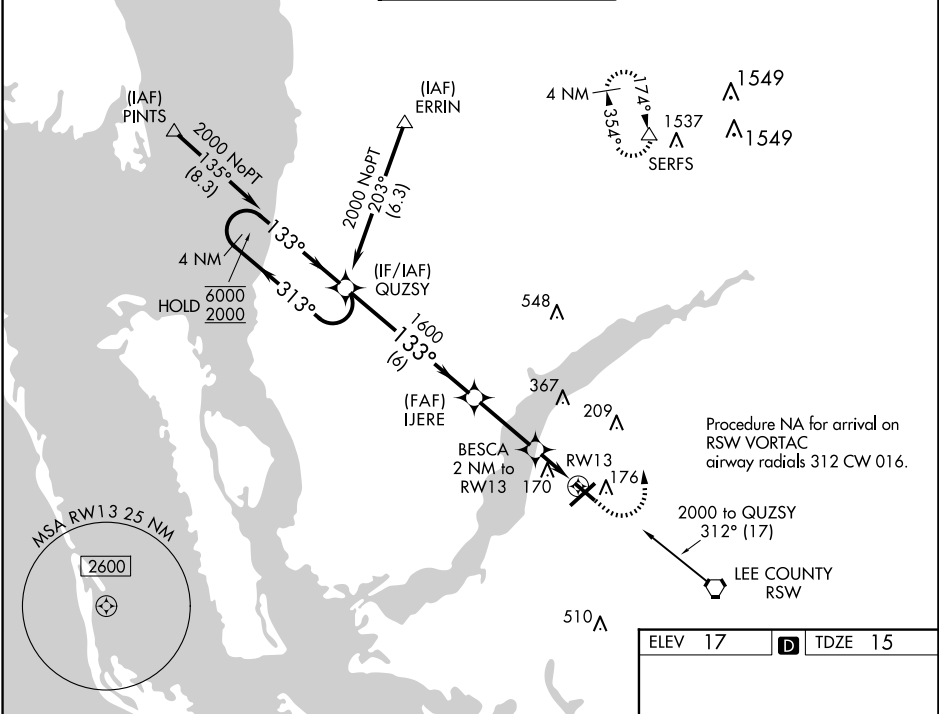


WAAS CH 73024 W13A	APP CRS 133°	Rwy Ldg 4296 TDZE 15 Apt Elev 17
--	------------------------	---

RNAV (GPS) RWY 13
PAGE FLD (FMY)

RNP APCH. When Circling to Rwy 31 at night, operational VGSI required, remain on or above VGSI glidepath until threshold. For uncompensated Baro-VNAV systems, LNAV/VNAV NA below -15°C or above 54°C.		MISSED APPROACH: Climb to 500 then climbing left turn to 2600 direct SERFS and hold.	
ATIS 123.725	FORT MYERS APP CON ★ 125.15 306.2 (Rwys 5, 13) 126.8 306.2 (Rwys 23, 31)	PAGE TOWER ★ 119.0 (CTAF) 306.95	GND CON 121.7
		CLNC DEL 121.7	



4 NM Holding Pattern		QUZSY	500	2600	SERFS
6000 ← 313°		133° →	*LNAV only.		
2000		133°	1600	BESCA 2 NM to RWY13	*680
GP 3.00°				*1.4 NM to RWY13	
TCH 30				RWY13	
		6 NM	2.9 NM	0.6 NM	1.4 NM
CATEGORY	A	B	C	D	
LPV DA	265-1		250 (300-1)		
LNAV/VNAV DA	480-1½		465 (500-1½)		
LNAV MDA	480-1 465 (500-1)		480-1½ 465 (500-1½)		
CIRCLING	540-1 523 (600-1)		600-1½ 583 (600-1½) 680-2 663 (700-2)		

