

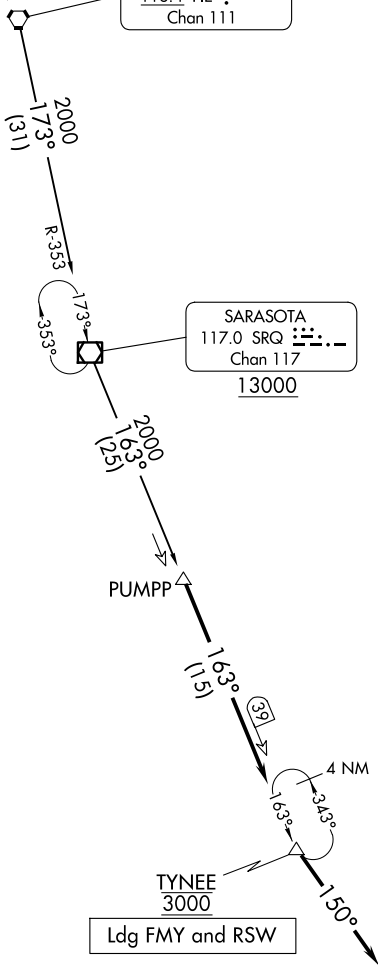
PUMPP TWO ARRIVAL

FORT MYERS, FLORIDA

MIAMI CENTER
134.75 322.5
FORT MYERS APP CON★
134.425 306.2
FMY ATIS
123.725
RSW D-ATIS
124.65

ST PETERSBURG
116.4 PIE ::-
Chan 111

RADAR required.
DME required.



NOTE: Chart not to scale.

PAGE
FLD

SOUTHWEST
FLORIDA INTL

ARRIVAL ROUTE DESCRIPTION

ST PETERSBURG TRANSITION (PIE.PUMPP2): From over PIE VORTAC on PIE R-173 and SRQ R-353 to SRQ VOR/DME, then on SRQ R-163 to PUMPP. Thence. . .

...from over PUMPP on SRQ R-163 to cross TYNEE at 3000, then on heading 150°. Expect RADAR vectors to final approach course.

PUMPP TWO ARRIVAL

FORT MYERS, FLORIDA

(PUMPP.PUMPP2) 12JUN25