

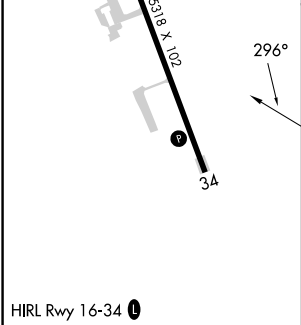
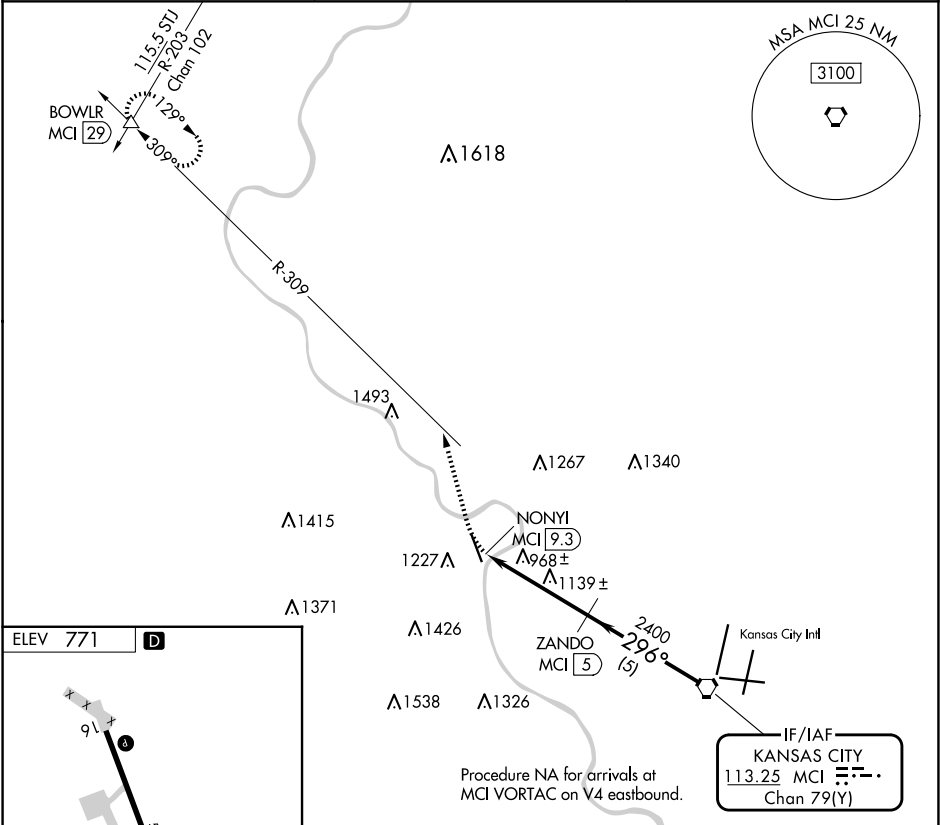
VORTAC MCI	APP CRS	Rwy Idg	N/A
<b>113.25</b>	<b>296°</b>	TDZE	N/A
Chan <b>79</b> (Y)		Apt Elev	<b>771</b>

VOR-A

SHERMAN AAF (F<sup>L</sup>V)

DME required.	MISSED APPROACH: Climbing right turn to 3000 on heading 340° and MCI R-309 to BOWLR and hold.
<div><div>Procedure NA at night. Circling NA west of Rwy 16-34. Use Kansas City Intl altimeter setting.</div></div>	

MCI ASOS <b>128.375</b>	KANSAS CITY APP CON <b>124.7 284.7</b>	CTAF <b>126.2</b>
----------------------------	---	----------------------



3000	MCI R-309	BOWLR	MCI VORTAC
hdg 340°			
NONYI MCI 9.3	ZANDO MCI 5		
2400	2400	296°	4000
4.3 NM	5 NM		
CATEGORY	A	B	C
CIRCLING	1460-1	689 (700-1)	1500-2
			729 (800-2)
			1640-2¾
			869 (900-2¾)

NC-2, 07 AUG 2025 to 04 SEP 2025

NC-2, 07 AUG 2025 to 04 SEP 2025