

APP CRS  
335°

Rwy Idg  
TDZE  
Apt Elev

5318  
769  
771

RNAV (GPS) RWY 34  
SHERMAN AAF (FLV)

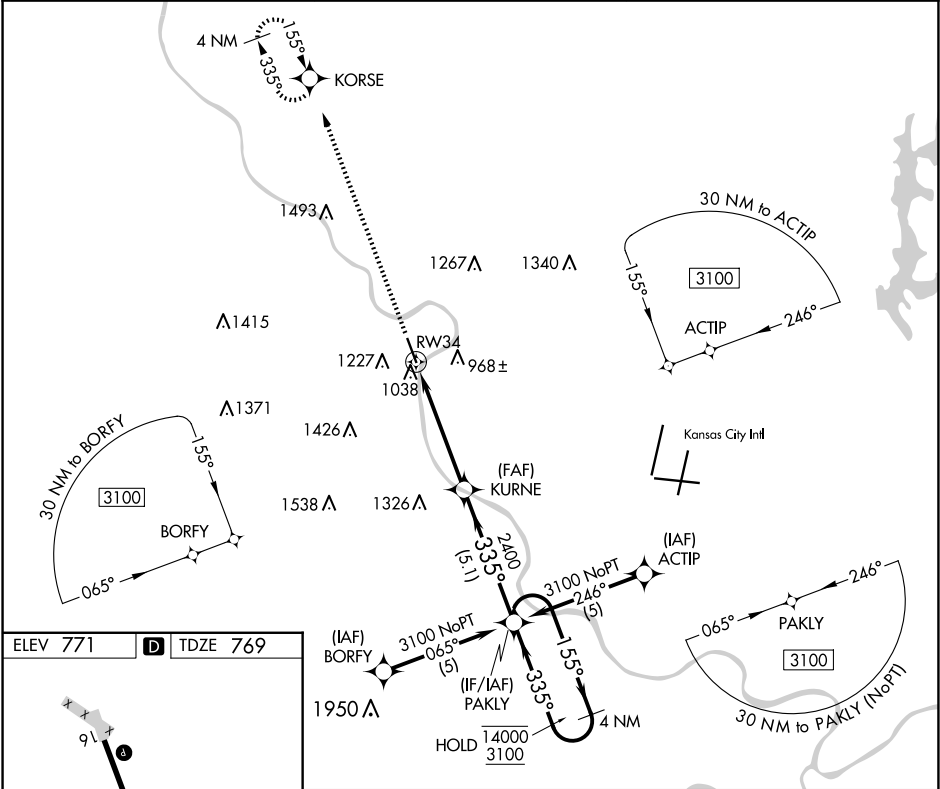
▼

NA

Circling NA west of Rwy 16-34. Procedure NA at night. Rwy 34 helicopter visibility reduction below 1 SM NA. Use Kansas City Intl altimeter setting.

MISSED APPROACH: Climb to 3000 direct KORSE and hold.

MCI ASOS 128.375	KANSAS CITY APP CON 124.7 284.7	CTAF 126.20
---------------------	------------------------------------	----------------



HIRL Rwy 16-34 **1**

53.8 x 102

335°

34

3000
↑

KORSE

Visual Segment - Obstacles.

KURNE

PAKLY

4 NM Holding Pattern

RW34

2400

4.9 NM

5.1 NM

155° → 14000
← 335° 3100

CATEGORY	A	B	C	D
LNAV MDA	1560-1 791 (800-1)	1560-1¼ 791 (800-1¼)	1560-2½ 791 (800-2½)	NA
<b>C</b> CIRCLING	1560-1 789 (800-1)	1560-1¼ 789 (800-1¼)	1560-2½ 789 (800-2½)	NA