

APP CRS
155°

Rwy Idg
TDZE
Apt Elev

5318
771
771

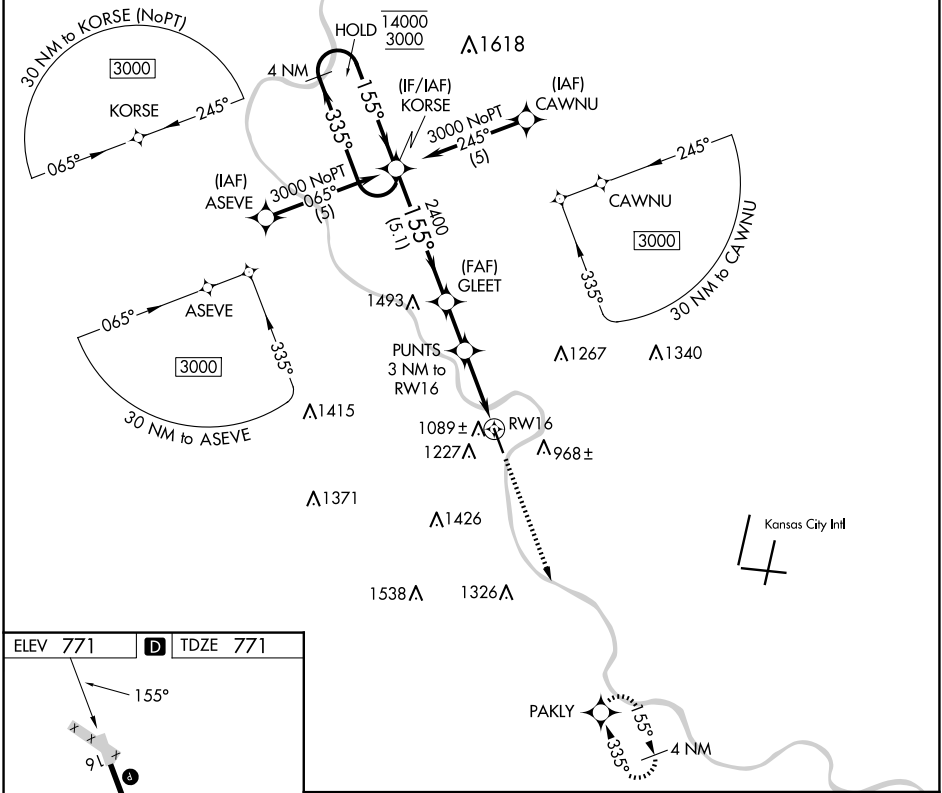
RNAV (GPS) RWY 16
SHERMAN AAF (FLV)

RNP APCH - GPS.

Circling NA west of Rwy 16-34. Procedure NA at night. Rwy 16 helicopter visibility reduction below 1 SM NA. Use Kansas City Intl altimeter setting.

MISSED APPROACH: Climb to 3100 direct PAKLY and hold.

MCI ASOS 128.375	KANSAS CITY APP CON 124.7 284.7	CTAF 126.20
----------------------------	---	-----------------------



ELEV 771 D TDZE 771

HIRL Rwy 16-34

4 NM Holding Pattern

VGSI and descent angles not coincident (VGSI Angle 3.00/TCH 40).

The diagram shows the descent path from 14000/3000 ft at KORSE, through GLEET (2400 ft) and PUNTS (3 NM to RW16), to the runway. The descent angle is 3.04° (TCH 50). The distance from KORSE to GLEET is 5.1 NM, and from GLEET to PUNTS is 1.9 NM. The final 3 NM segment leads to the runway.

CATEGORY	A	B	C	D
LNAV MDA	1520-1 749 (800-1)	1520-1¼ 749 (800-1¼)	1520-2 749 (800-2)	NA
CIRCLING	1520-1 749 (800-1)	1520-1¼ 749 (800-1¼)	1520-2¼ 749 (800-2¼)	NA