

RNAV (GPS) RWY 18

APCH CRS	Rwy Idg	5184
180°	TDZE	754
	Arpt Elev	754

[USA]

GODMAN AAF (KFKT)

RNP APCH - GPS

⚠ Circling not authorized E of Rwy 18-36. When circling to Rwy 36 at night, operational VGSi required, remain on or above VGSi glidepath until thld. Circling to Rwy 15 not authorized at night.

SSALR



MISSED APPROACH: Climbing right to 2600, direct to NADDI and hold.

ATIS 109.6	LOUISVILLE APP CON 132.075 327.0	TOWER★ 133.35 (CTAF) 0	GND CON 121.9 239.3
---------------	-------------------------------------	---------------------------	------------------------

Helicopter visibility reduction below 1 SM NA.

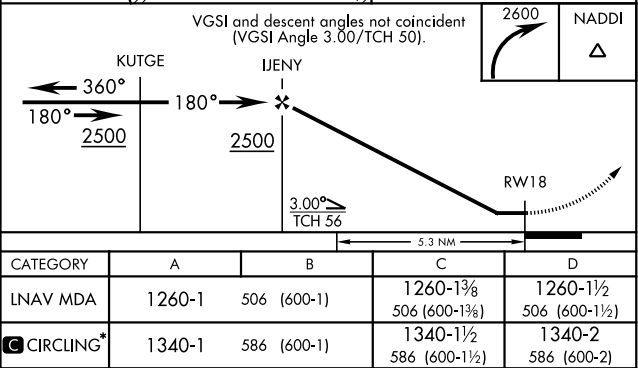
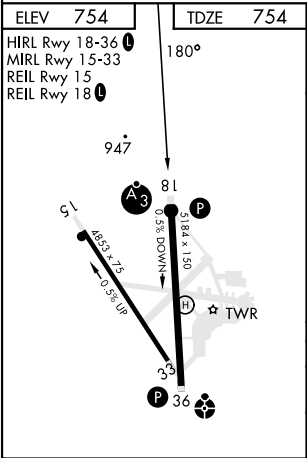
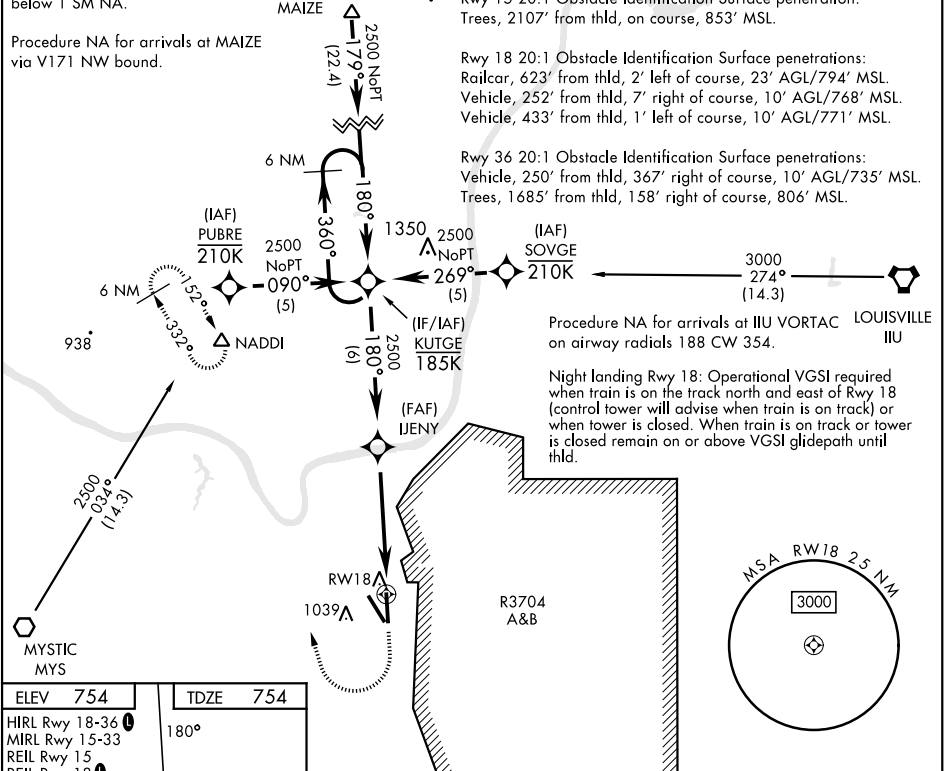
Procedure NA for arrivals at MAIZE via V171 NW bound.

(IAF) MAIZE 1020

Rwy 15 20:1 Obstacle Identification Surface penetration: Trees, 2107' from thld, on course, 853' MSL.

Rwy 18 20:1 Obstacle Identification Surface penetrations:
Railcar, 623' from thld, 2' left of course, 23' AGL/794' MSL.
Vehicle, 252' from thld, 7' right of course, 10' AGL/768' MSL.
Vehicle, 433' from thld, 1' left of course, 10' AGL/771' MSL.

Rwy 36 20:1 Obstacle Identification Surface penetrations:
Vehicle, 250' from thld, 367' right of course, 10' AGL/735' MSL.
Trees, 1685' from thld, 158' right of course, 806' MSL.



RNAV (GPS) RWY 18

SE-1, 07 AUG 2025 to 04 SEP 2025

SE-1, 07 AUG 2025 to 04 SEP 2025