

RNAV (GPS) RWY 15

APCH CRS 151°	Rwy Idg 4853 TDZE 754 Arpt Elev 754
-------------------------	--

AL-151 [USA]

GODMAN AAF (KFTK)

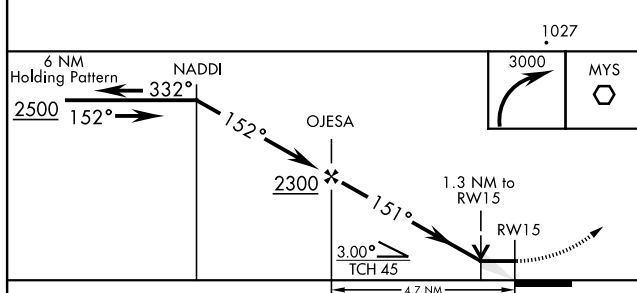
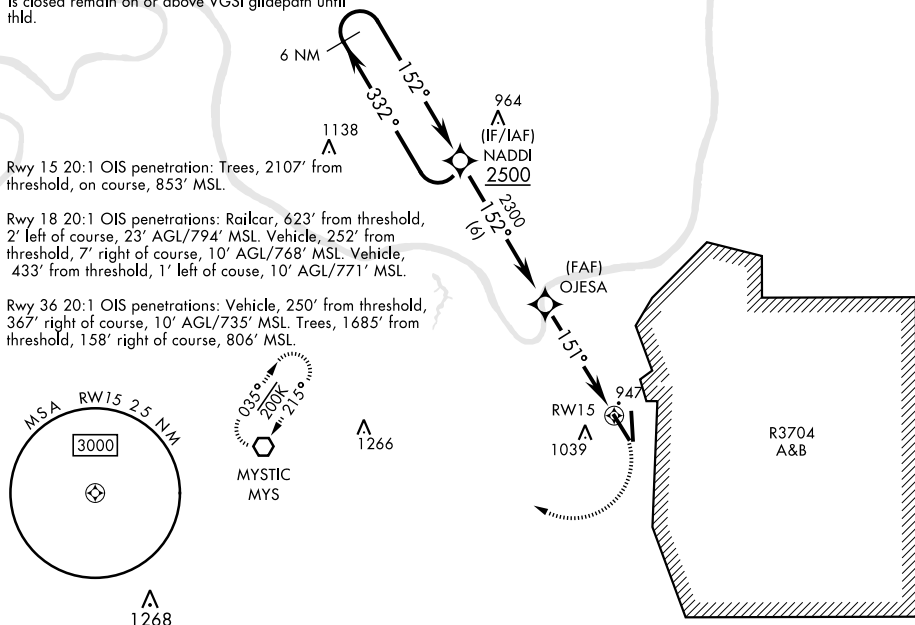
RNP APCH - GPS

▼ *Straight-in minimums NA at night. Helicopter visibility reduction below 1 mile NA.
****** Circling not authorized E of Rwy 18-36. When circling to Rwy 36 at night, operational VGSI required, remain on or above VGSI glidepath until threshold.

MISSED APPROACH: Climbing right turn to 3000 direct MYS VOR and hold.

ATIS 109.6	LOUISVILLE APP CON 132.075 327.0	TOWER ★ 133.35 (CTAF) 0	GND CON 121.9 239.3
----------------------	--	-----------------------------------	-------------------------------

Circling to Rwy 18 at night: Operational VGSI required when train is on the track north and east of Rwy 18 (control tower will advise when train is on track) or when tower is closed. When train is on track or tower is closed remain on or above VGSI glidepath until thld.



CATEGORY	A	B	C	D
LNAV MDA*	1260-1	506 (600-1)	1260-1 $\frac{3}{8}$	506 (600-1 $\frac{3}{8}$)
CIRCLING**	1340-1	586 (600-1)	1340-1 $\frac{1}{2}$ 586 (600-1 $\frac{1}{2}$)	1340-2 586 (600-2)

