

WRIGHTSTOWN, NEW JERSEY

VOR/DME or TACAN RWY 6

MC GUIRE FLD.

(JOINT BASE MC GUIRE DIX LAKEHURST) (KWRI)

VORTAC GXU 110.6 Chan 43	APCH CRS 044°	Rwy Idg 11,009 TDZE 131 Arpt Elev 141
--	-------------------------	--

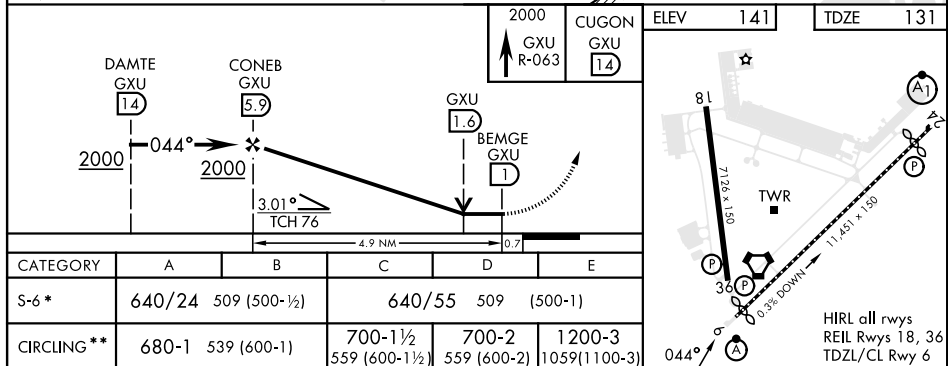
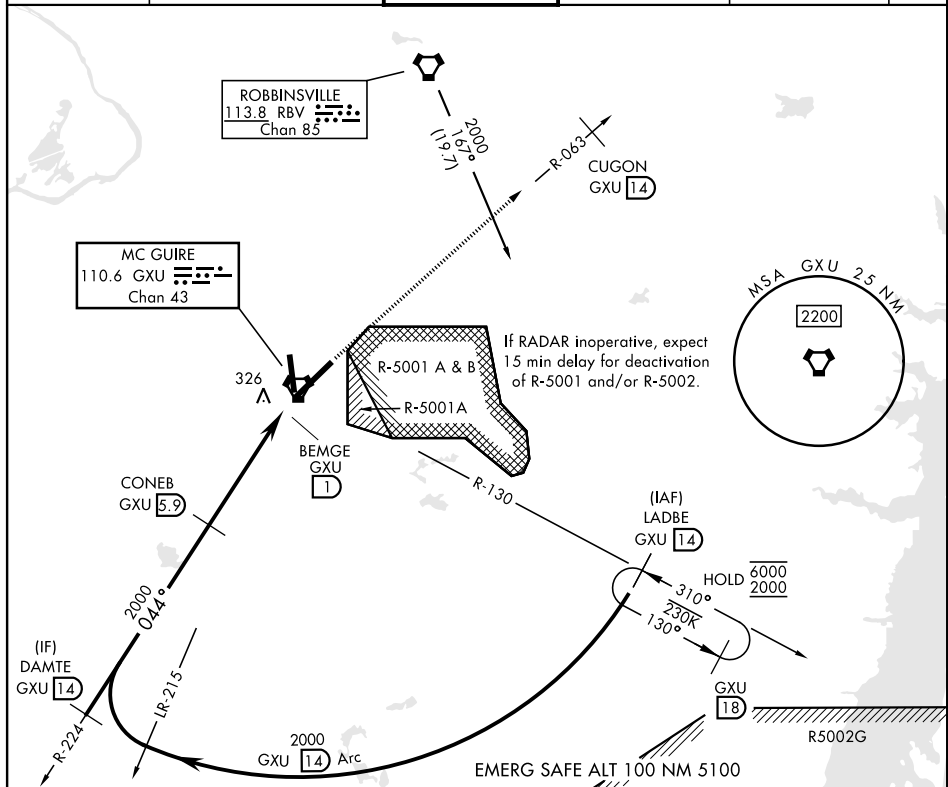
[USAF]

MISSED APPROACH: Climb to 2000 via GXU VORTAC R-063 to CUGON, expect further clearance from ATC.

ALSF-2



ATIS 110.6 270.1	MC GUIRE APP CON/DEP CON 126.475 363.8	MC GUIRE TOWER 118.65 255.6	GND CON 121.8 275.8	CLNC DEL 135.2 335.8	PAR
---------------------	---	--------------------------------	------------------------	-------------------------	-----



WRIGHTSTOWN, NEW JERSEY

40°00'N-74°36'W

MC GUIRE FLD.

(JOINT BASE MC GUIRE DIX LAKEHURST) (KWRI)

Amdt 7 18MAY23

VOR/DME or TACAN RWY 6

NE-2, 07 AUG 2025 to 04 SEP 2025

NE-2, 07 AUG 2025 to 04 SEP 2025