

WRIGHTSTOWN, NEW JERSEY

VOR/DME or TACAN RWY 36

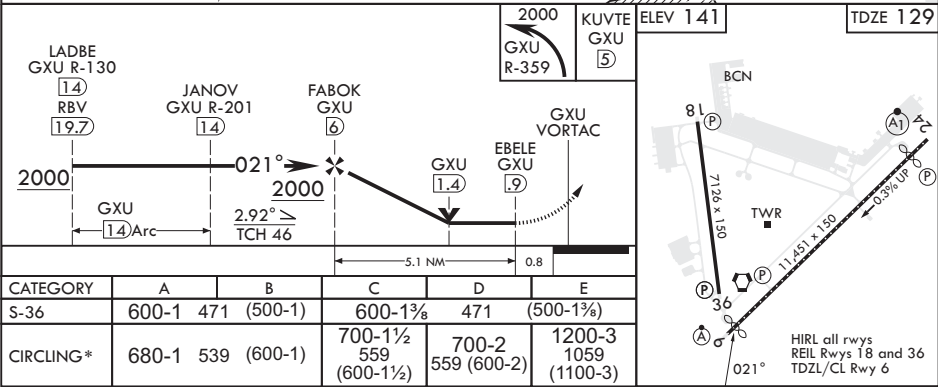
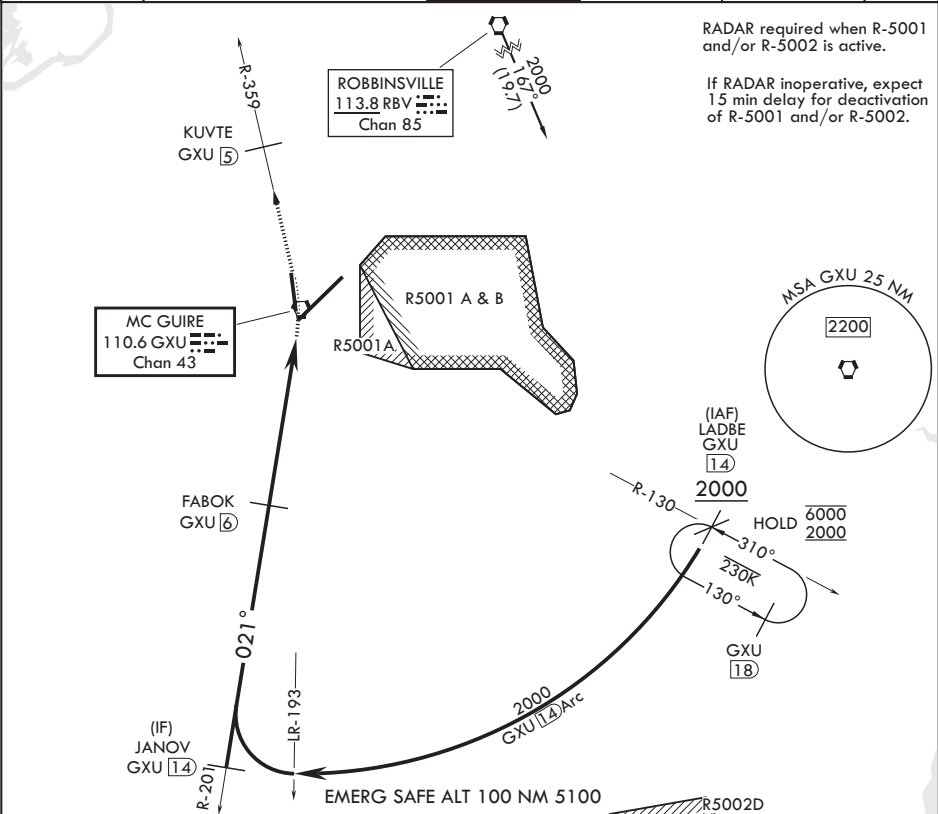
VORTAC GXU 110.6 Chan 43	APCH CRS 021°	Rwy Idg TDZE Arpt Elev	7126 129 141
--------------------------------	------------------	------------------------------	--------------------

(USAF)

MC GUIRE FIELD (JOINT BASE MC GUIRE DIX LAKEHURST) (KWRI)

▼ * Circling NA SE of Rwy 24 and E of Rwy 36 when R-5001 A/B Active. MISSED APPROACH: Climb to 2000 via GXU R-359 to KUVTE, expect further clearance with ATC.

ATIS 110.6 270.1	MC GUIRE APP CON/DEP CON 126.475 363.8	TOWER 118.65 255.6	GND CON 121.8 275.8	CLNC DEL 135.2 335.8	PAR
---------------------	---	-----------------------	------------------------	-------------------------	-----



WRIGHTSTOWN, NEW JERSEY

Amtd 7 18MAY23

MC GUIRE FIELD (JOINT BASE MC GUIRE DIX LAKEHURST) (KWRI)

40°01'N - 74°36'W

VOR/DME or TACAN RWY 36

NE-2, 07 AUG 2025 to 04 SEP 2025

NE-2, 07 AUG 2025 to 04 SEP 2025