

WRIGHTSTOWN, NEW JERSEY

VOR/DME or TACAN RWY 24

VORTAC GXU 110.6 Chan 43	APCH CRS 243°	Rwy Idg TDZE Arpt Elev	10,456 117 141
--------------------------------	------------------	------------------------------	----------------------

(USAF)

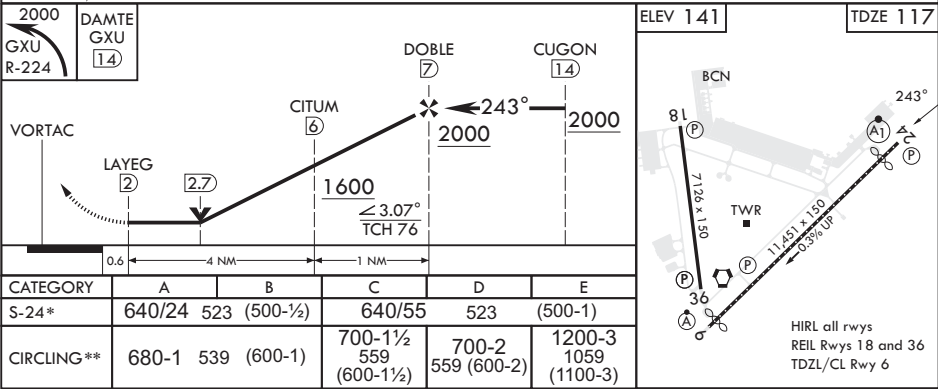
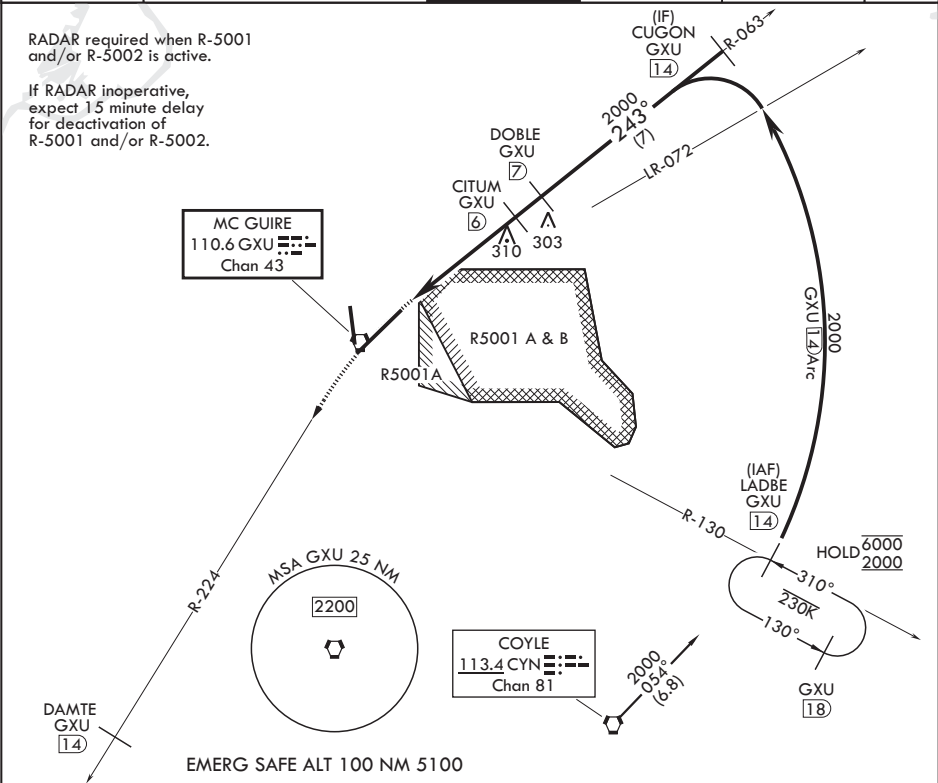
MC GUIRE FIELD (JOINT BASE MC GUIRE DIX LAKEHURST) (KWRI)

⚠ * When ALS inop, increase CAT AB RVR to 55 and vis to 1 mile, CAT CDE vis to 1 1/2 miles.
** Circling NA SE of Rwy 24 and E of Rwy 36 when R-5001 A/B Active.



MISSED APPROACH: Climb to 2000 via GXU R-224 to DAMTE, Expect further clearance from ATC.

ATIS 110.6 270.1	MC GUIRE APP CON/DEP CON 126.475 363.8	TOWER 118.65 255.6	GND CON 121.8 275.8	CLNC DEL 135.2 335.8	PAR
---------------------	---	-----------------------	------------------------	-------------------------	-----



WRIGHTSTOWN, NEW JERSEY

Amdt 8 18MAY23

MC GUIRE FIELD (JOINT BASE MC GUIRE DIX LAKEHURST) (KWRI)

40°01'N - 74°36'W

VOR/DME or TACAN RWY 24

NE-2, 07 AUG 2025 to 04 SEP 2025

NE-2, 07 AUG 2025 to 04 SEP 2025