

WRIGHTSTOWN, NEW JERSEY

VORTAC GXU 110.6 Chan 43	APCH CRS 179°	Rwy Idg 7126 TDZE 123 Arpt Elev 141
--	-------------------------	--

[USAF]

VOR/DME or TACAN RWY 18
MC GUIRE FLD,
(JOINT BASE MC GUIRE DIX LAKEHURST) (KWRI)

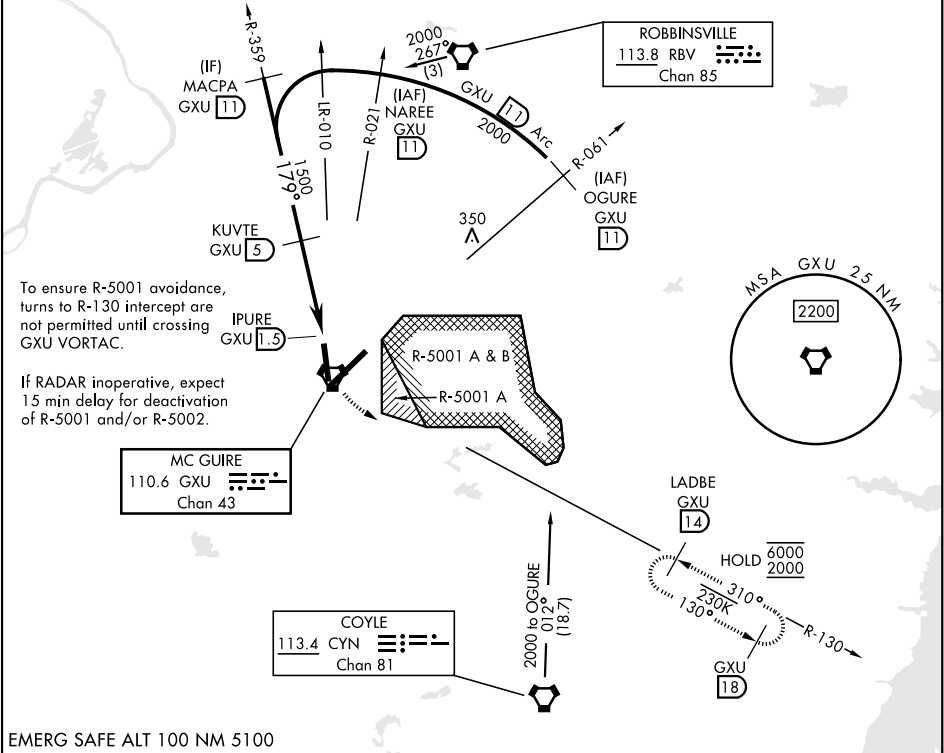
25219

RADAR required when R-5001 and/or R-5002 is active.

* Circling NA SE of RWY 24 and E of RWY 36 when R-5001 A/B active.

MISSED APPROACH: Climb to 2000 via GXU VORTAC R-130 to LADBE and hold, DO NOT turn prior to GXU.

ATIS 110.6 270.1	MC GUIRE APP CON/DEP CON 126.475 363.8	MC GUIRE TOWER 118.65 255.6	GND CON 121.8 275.8	CLNC DEL 135.2 335.8	PAR
----------------------------	--	---------------------------------------	-------------------------------	--------------------------------	-----



EMERG SAFE ALT 100 NM 5100

OGURE R-061 GXU 11		NAREE R-021 GXU 11		MACPA R-359 GXU 11		KUVTE GXU 5		GXU 2.5		IPURE GXU 1.5		LADBE GXU 14		ELEV 141		TDZE 123	
2000		2000		2000		179°		1500		3.18°		TCH 68		3.5 NM		0.4	
CATEGORY		A		B		C		D		E							
S-18		640-1		517 (500-1)		640-1½		517 (500-1½)									
CIRCLING *		680-1		539 (600-1)		700-1½ 559 (600-1½)		700-2 1059 (600-2)		1200-3 1059 (1100-3)							

WRIGHTSTOWN, NEW JERSEY

40°00'N-74°36'W

Amtd 8 18MAY23

MC GUIRE FLD,
(JOINT BASE MC GUIRE DIX LAKEHURST) (KWRI)

VOR/DME or TACAN RWY 18

Diagram illustrating the approach procedure for Wrightstown, New Jersey, showing waypoints (OGURE, NAREE, MACPA, KUVTE, GXU 2.5, IPURE), altitudes (2000, 1500, 179°, 3.18°, 3.5 NM, 0.4), and the runway layout (RWY 18, TWR, HIRL, REIL, TDZL/CL).

NE-2, 07 AUG 2025 to 04 SEP 2025