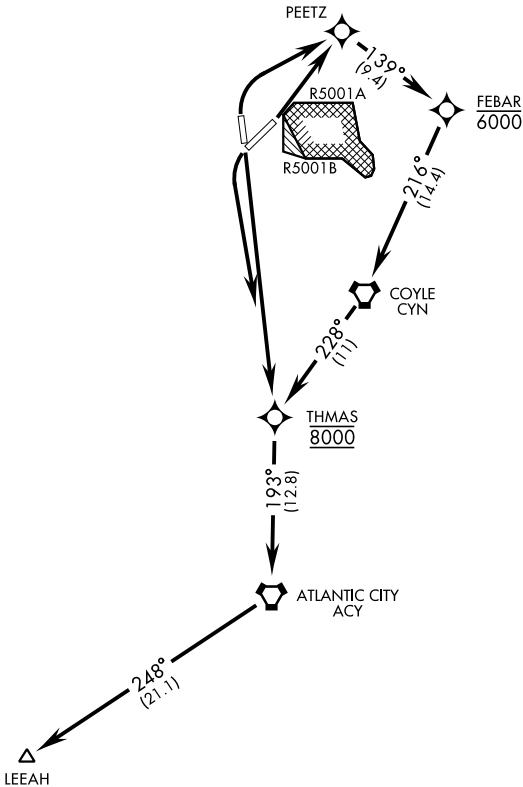


ATIS 110.6 270.1 CLNC DEL 135.2 335.8 GND CON 121.8 275.8 TOWER 118.65 255.6 MC GUIRE APP CON/DEP CON 126.475 363.8	RNAV1-GPS	Rwy	Knots	60	120	180	240	300	360
	[USAF]	06	V/V(fpm)	237	474	711	948	1185	1422
		18	V/V(fpm)	387	774	1161	1548	1935	2322
		24	V/V(fpm)	384	768	1152	1536	1920	2304
		36	V/V(fpm)	213	426	639	852	1065	1278

ATC Climb Rate to 8000



Rwy 06 Departure: RADAR required (when R-5001 is active)

If RADAR inoperative, expect 15 min delay for deactivation of R-5001.

▼

DEPARTURE ROUTE DESCRIPTION

TAKEOFF RWY 06: Climb direct PEETZ then track and climb as depicted. Maintain 8000.

TAKEOFF RWY 18: Climb direct to cross THMAS at and maintain 8000, then track as depicted.

TAKEOFF RWY 24: Climbing left turn direct to cross THMAS at and maintain 8000, then track as depicted.

TAKEOFF RWY 36: Climbing right turn direct PEETZ then track and climb as depicted. Maintain 8000.

Expect further ATC clearance to filed altitude within 10 minutes after departure.

NE-2, 07 AUG 2025 to 04 SEP 2025

NE-2, 07 AUG 2025 to 04 SEP 2025