

WRIGHTSTOWN, NEW JERSEY

RNAV (RNP) Z RWY 24

APCH CRS	Rwy Idg	10,456
238°	TDZE	117
	Arpt Elev	141

(USAF)

MC GUIRE FIELD (JOINT BASE MC GUIRE DIX LAKEHURST) (KWRI)

RNP AR APCH. From EXMEN and GRACE: RF.

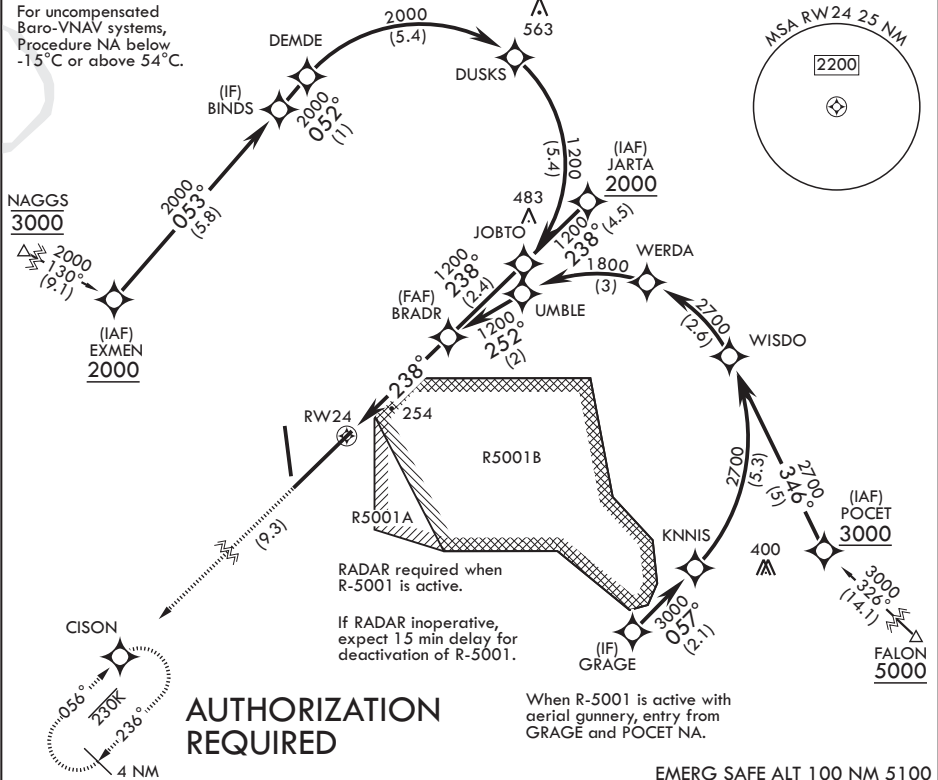


MISSED APPROACH: Climb to 2100 on track 238° to CISON and hold, continue to climb-in-hold to 2100.

* When ALS inop increase RVR to 50, vis to 1 mile.
** When ALS inop increase vis to 1 3/8 miles.

ATIS	MC GUIRE APP CON/DEP CON	TOWER	GND CON	CLNC DEL	PAR
110.6 270.1	126.475 363.8	118.65 255.6	121.8 275.8	135.2 335.8	

For uncompensated Baro-VNAV systems, Procedure NA below -15°C or above 54°C.



2100	CISON	VGSI and RNAV glidepath not coincident (VGSI Angle 3.00/TCH 76).	See planview for multiple IF locations	BRADR	ELEV 141	TDZE 117
tr 238°				1200		
				1200		
				GP 3.00°		
				TCH 54		
				3.3 NM		
CATEGORY	A	B	C	D		
RNP 0.10 DA*	449/26	332	(400-1/2)			
RNP 0.13 DA*	456/26	339	(400-1/2)			
RNP 0.30 DA**	593/50	476	(500-1)			

WRIGHTSTOWN, NEW JERSEY

MC GUIRE FIELD (JOINT BASE MC GUIRE DIX LAKEHURST) (KWRI)

Orig 20APR23

40°01'N - 74°36'W

RNAV (RNP) Z RWY 24

NE-2, 07 AUG 2025 to 04 SEP 2025

NE-2, 07 AUG 2025 to 04 SEP 2025