

RNAV (GPS) RWY 6

WAAS CH 91356 W06A	APCH CRS 058°	Rwy ldg TDZE Arpt Elev	11,009 131 141
--------------------------	------------------	------------------------------	----------------------

(USAF)

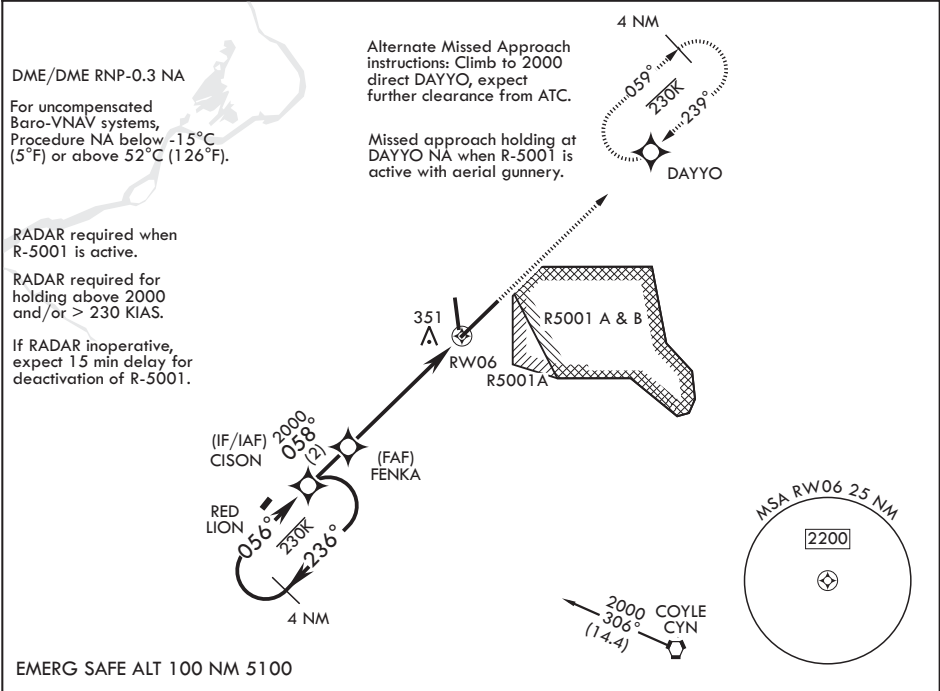
MC GUIRE FIELD (JOINT BASE MC GUIRE DIX LAKEHURST) (KWRI)

When TDZ/CL lights inop, increase RVR to 24. When ALS inop, increase RVR to 40, vis to 3/4 mile.  
When ALS inop, increase vis to 1 1/4 miles.  
When ALS inop, increase CAT AB RVR to 55, vis to 1 mile; CAT CDE vis to 1 1/4 miles.  
Circling NA SE of Rwy 24 and E of Rwy 36 when R-5001 A/B Active.

ALSIF-2

MISSED APPROACH: Climb to 2000 direct DAYYO and hold.

ATIS 110.6 270.1	MC GUIRE APP CON/DEF CON 126.475 363.8	TOWER 118.65 255.6	GND CON 121.8 275.8	CLNC DEL 135.2 335.8	PAR
---------------------	---	-----------------------	------------------------	-------------------------	-----



4 NM Holding Pattern

GP 3.00° TCH 56

2000

056°

236°

CISON

FENKA

2000

058°

1.1 NM to RW06

5.7 NM

RW06

VGSI and RNAV glidepath not coincident (VGSI angle 3.00/TCH 76).

2000

DAYYO

ELEV 141

TDZE 131

CATEGORY	A	B	C	D	E
LPV DA*	331/18		200	(200-½)	
LNAV/VNAV DA**	560/40		429	(500-¾)	
LNAV MDA***	560/24	429 (500-½)	560/40	429	(500-¾)
CIRCLING****	680-1	539 (600-1)	700-1½ 559 (600-1½)	700-2 559 (600-2)	1200-3 1059 (1100-3)

BCN

81

7126 x 150

TWR

11451 x 150

0.3% DOWN

36

058°

HIRL all rwys

REIL Rwys 18 and 36

TDZL/CL Rwy 6

RNAV (GPS) RWY 6

NE-2, 07 AUG 2025 to 04 SEP 2025

NE-2, 07 AUG 2025 to 04 SEP 2025