

RNAV (GPS) RWY 36

APCH CRS	Rwy Idg	7126
005°	TDZE	129
	Arpt Elev	141

(USAF)

MC GUIRE FIELD (JOINT BASE MC GUIRE DIX LAKEHURST) (KWRI)

* Circling NA SE of Rwy 24 and E of Rwy 36 when R-5001 A/B Active.	MISSED APPROACH: Climb to 2000 direct DUOVR, then turn right direct FATBU and hold.
--	---

ATIS 110.6 270.1	MC GUIRE APP CON/DEP CON 126.475 363.8	TOWER 118.65 255.6	GND CON 121.8 275.8	CLNC DEL 135.2 335.8	PAR
---------------------	---	-----------------------	------------------------	-------------------------	-----

DME/DME RNP-0.3 NA

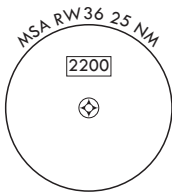
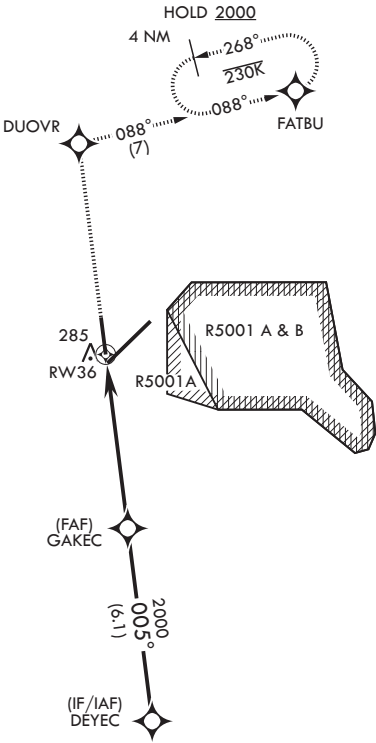
RADAR required when R-5001 is active.

RADAR required for holding above 2000 and/or > 230 KIAS.

If RADAR inoperative, expect 15 min delay for deactivation of R-5001.

Alternate Missed Approach instructions: Climb to 2000 direct DUOVR, expect further clearance from ATC.

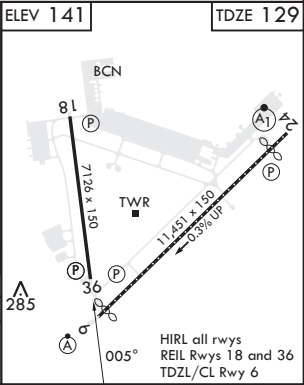
Missed approach holding at FATBU NA when R-5001 is active with aerial gunnery.



EMERG SAFE ALT 100 NM 5100

2000		DUOVR		ELEV 141		TDZE 129	
CATEGORY	A		B	C		D	E
LNAV MDA	560-1	431	(500-1)	560-1¼		431	(500-1¼)
CIRCLING*	680-1	539	(600-1)	700-1½ 559 (600-1½)		700-2 559 (600-2)	1200-3 1059 (1100-3)

HIRL all rwys
REIL Rwys 18 and 36
TDZL/CL Rwy 6



RNAV (GPS) RWY 36

NE-2, 07 AUG 2025 to 04 SEP 2025

NE-2, 07 AUG 2025 to 04 SEP 2025