

APCH CRS 185°	Rwy Idg 7126 TDZE 123 Arpt Elev 141
------------------	-------------------------------------------

(USAF)

MC GUIRE FIELD (JOINT BASE MC GUIRE DIX LAKEHURST) (KWRI)

▼ *Circling NA SE of Rwy 24 and E of Rwy 36 when R-5001 A/B Active.

MISSED APPROACH: Climb to 2000 direct KRIZZ and hold.

ATIS
110.6 270.1

MC GUIRE APP CON/DEP CON
126.475 363.8

TOWER
118.65 255.6

GND CON
121.8 275.8

CLNC DEL
135.2 335.8

DAD

DME/DME RNP-0.3 NA

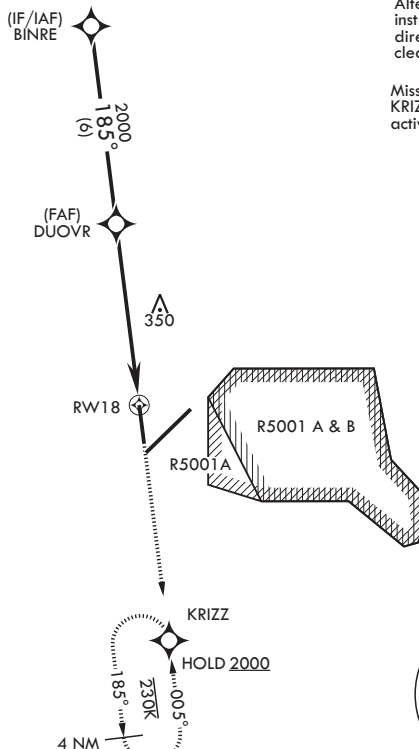
RADAR required when R-5001 is active and/or R-5002 is active.

RADAR required for holding above 2000 and/or > 230 KIAS.

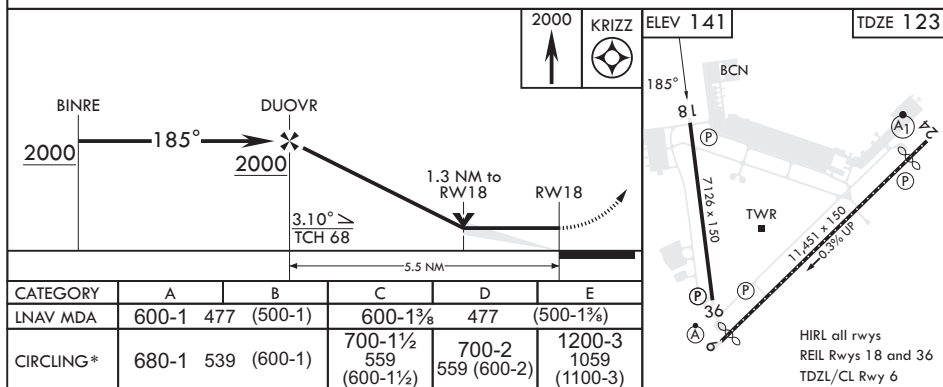
If RADAR inoperative, expect 15 min delay for deactivation of R-5001 and/or R-5002.

Alternate Missed Approach
instructions: Climb to 2000
direct KRIZZ, expect further
clearance from ATC.

Missed approach holding at KRIZZ NA when R-5001 is active with aerial gunnery.



EMERG SAFE ALT 100 NM 5100



WRIGHTSTOWN, NEW JERSEY

MC GUIRE FIELD (JOINT BASE MC GUIRE DIX LAKEHURST) (KWRI)

Amdt 6 18MAY23

40°01'N - 74°36'W

RNAV (GPS) RWY 18

NE-2, 07 AUG 2025 to 04 SEP 2025