

WRIGHTSTOWN, NEW JERSEY

ILS or LOC RWY 24

LOC I-JTQ 110.1	APCH CRS 238°	Rwy Idg 10,456	TDZE 117	Arpt Elev 141
--------------------	------------------	-------------------	-------------	------------------

(USAF)

MC GUIRE FIELD (JOINT BASE MC GUIRE DIX LAKEHURST) (KWRI)

⚠ \* When ALS inop, increase RVR to 40, vis to 3/4 mile. +RVR 18 authorized with use of FD or AP or HUD to DA.  
\*\* When ALS inop, increase CAT AB RVR to 55, vis to 1 mile, CAT CDE vis to 1 3/8 miles.  
\*\*\* Circling NA SE of Rwy 24 and E of Rwy 36 when R-5001 A/B Active.

ALSF-1  
A1  
MISSED APPROACH: Climb to 2000 via GXU R-236 to CISON and hold.

ATIS 110.6 270.1	MC GUIRE APP CON/DEP CON 126.475 363.8	TOWER 118.65 255.6	GND CON 121.8 275.8	CLNC DEL 135.2 335.8	PAR
---------------------	---	-----------------------	------------------------	-------------------------	-----

RADAR or DME required to identify the FAF.

RADAR required when R-5001 is active.

RADAR required for holding above 2000 and/or > 230 KIAS.

If RADAR inoperative, expect 15 min delay for deactivation of R-5001.

ROBBINSVILLE  
113.8 RBV  
Chan 85

MC GUIRE  
110.6 GXU  
Chan 43

LOCALIZER 110.1  
I-JTQ

CISON  
GXU 7.9  
056°  
230K  
236°  
GXU 11.9

CUTIL  
GXU 7.2  
RADAR  
ZUVAX  
GXU 6  
258

058°  
230K  
238°  
2000  
238°  
(2)  
(IF/IAF)  
DAYYO  
GXU 9.2

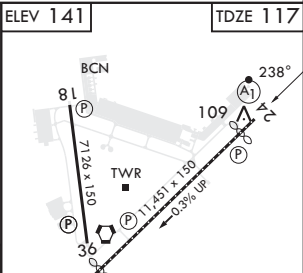
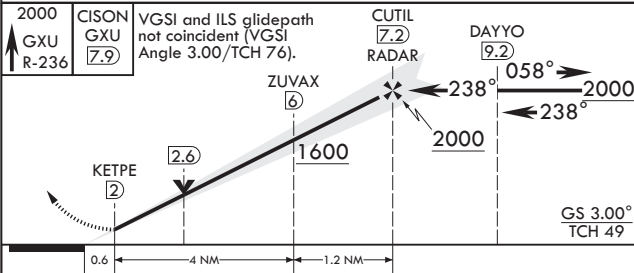
R5001A

R5001 A & B

When R-5001 is active with aerial gunnery, DAYYO hold-in-lieu of procedure turn NA, expect RADAR vectors.



EMERG SAFE ALT 100 NM 5100



CATEGORY	A	B	C	D	E
S-ILS 24†	317/24		200	(200-½)	
S-LOC 24**	580/24	463 (500-½)	580/50	463	(500-1)
CIRCLING***	680-1	539 (600-1)	700-1½ 559 (600-1½)	700-2 1059 (600-2)	1200-3 1059 (1100-3)

HIRL all rwys REIL Rwy 18 and 36 TDZL/CL Rwy 6					
FAF to MAP 5.2 NM					
Knots	60	90	120	150	180
Min:Sec	5:12	3:28	2:36	2:05	1:44

WRIGHTSTOWN, NEW JERSEY

MC GUIRE FIELD (JOINT BASE MC GUIRE DIX LAKEHURST) (KWRI)

Amdt 6 18MAY23

40°01'N - 74°36'W

ILS or LOC RWY 24

NE-2, 07 AUG 2025 to 04 SEP 2025

NE-2, 07 AUG 2025 to 04 SEP 2025