

ILS RWY 6 (CAT II)

MC GUIRE FLD,

LOC I-WRI 110.1	APCH CRS 058°	Rwy Idg 11,009 TDZE 131 Arpt Elev 141
---------------------------	-------------------------	--

[USAF]

(JOINT BASE MC GUIRE DIX LAKEHURST) (KWRI)

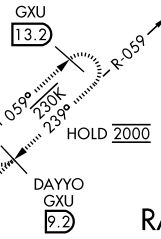
RADAR or DME required to identify the FAF.

ALSF-2

MISSED APPROACH: Climb to 2000 via GXU R-059 to DAYYO and hold. Alternate Missed Approach instructions: Climb to 2000 via GXU R-059 to DAYYO, expect further clearance from ATC.

ATIS 110.6 270.1	MC GUIRE APP CON/DEP CON 126.475 363.8	MC GUIRE TOWER 118.65 255.6	GND CON 121.8 275.8	CLNC DEL 135.2 335.8	PAR
----------------------------	--	---------------------------------------	-------------------------------	--------------------------------	-----

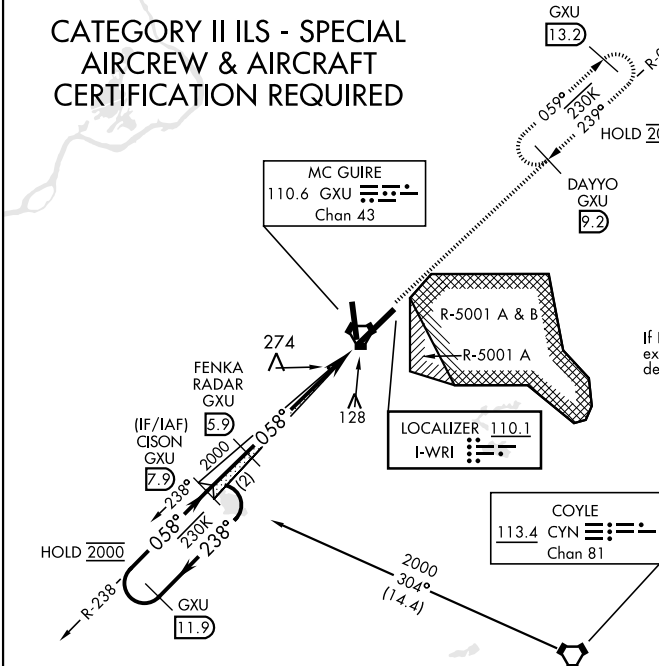
CATEGORY II ILS - SPECIAL
AIRCREW & AIRCRAFT
CERTIFICATION REQUIRED



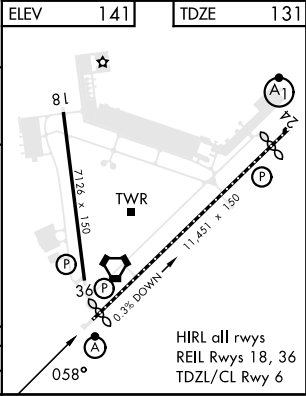
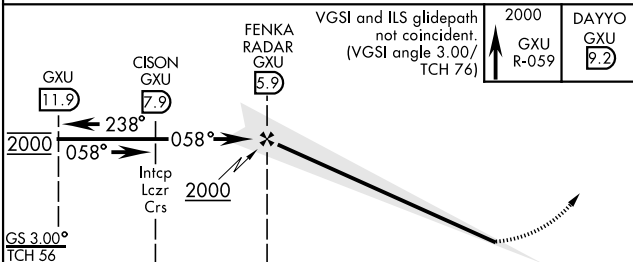
Missed Approach holding at DAYYO NA when R-5001 is active with aerial gunnery.

RADAR REQUIRED
WHEN R-5001
IS ACTIVE

If RADAR inoperative,
expect 15 min delay for
deactivation of R-5001.



EMERG SAFE ALT 100 NM 5100



CATEGORY	A	B	C	D	E
S-ILS 6	RA 91/12	100	DA 231		

ILS RWY 6 (CAT II)

NE-2, 07 AUG 2025 to 04 SEP 2025

NE-2, 07 AUG 2025 to 04 SEP 2025