

VOR/DME FBR	APP CRS	Rwy Ldg	6404
114.45	215°	TDZE	7018
Chan 91 (Y)		Apt Elev	7038

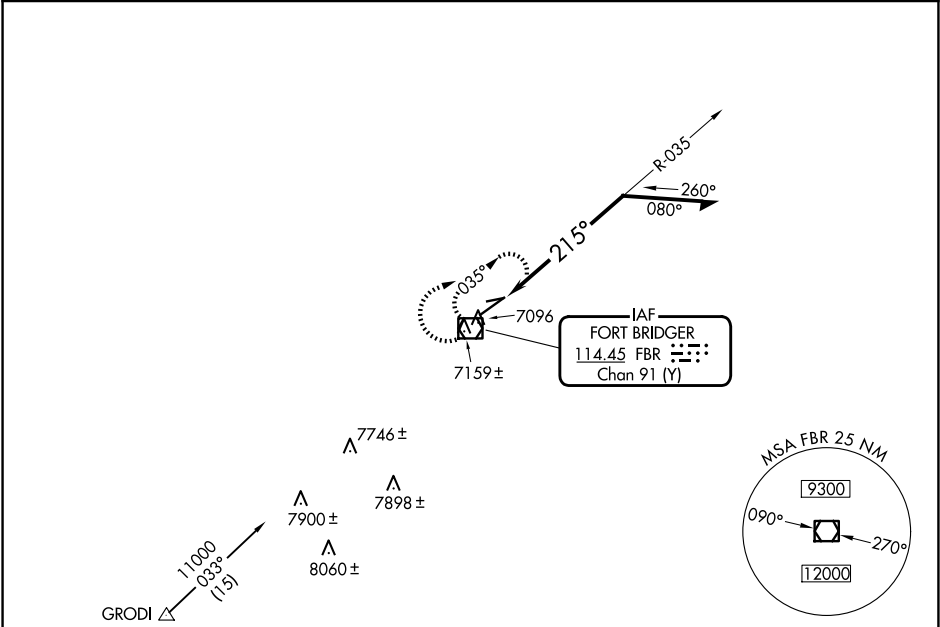
VOR RWY 22  
FORT BRIDGER (FBR)

NA

Circling NA to Rwys 7 and 25. When local altimeter setting not received, use Evanston altimeter setting and increase all MDAs 100 feet, increase S-22 Cats C and D and Circling Cat C visibility ¼ SM, and Circling Cat D visibility ½ SM.

MISSED APPROACH:  
Climbing right turn to 9000 in FBR VOR/DME holding pattern.

AWOS-3PT 118.8	SALT LAKE CENTER 124.35 353.5	UNICOM 122.8 (CTAF) 0
-------------------	----------------------------------	--------------------------



9000

FBR

FBR VOR/DME 8900

Remain within 10 NM

8500

035°

215°

CATEGORY	A	B	C	D
S-22	7440-1	422 (500-1)	7440-1 ¼	422 (500-1 ¼)
CIRCLING	7480-1 442 (500-1)	7500-1 462 (500-1)	7660-1 ¾ 622 (700-1 ¾)	7680-2 642 (700-2)

ELEV 7038 TDZE 7018

Profile view showing glide paths: 3520 X 50 (0.3% UP) and 6404 X 75 (0.5% UP). Altitudes 8500 and 9000 are marked. A star indicates the runway threshold.

REIL Rwys 4 and 22 0

MIRL Rwy 4-22 0

NW-1, 07 AUG 2025 to 04 SEP 2025

NW-1, 07 AUG 2025 to 04 SEP 2025