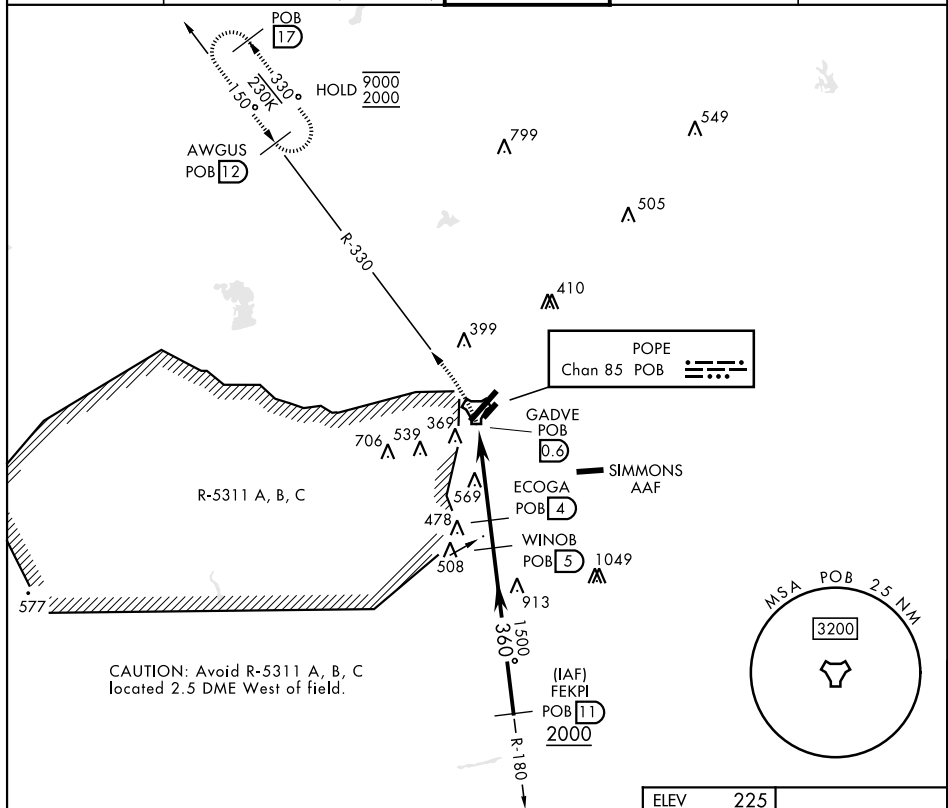


TACAN POB Chan 85	APCH CRS 360°	Rwy Idg TDZE Arprt Elev N/A N/A 225	[USAF]		TACAN-A POPE AAF (KPOB)
RADAR required ▼ * Circling not authorized SE of Rwy 5-23.			MISSED APPROACH: Climbing left turn to 2000 via POB R-330 to AWGUS and hold.		
ATIS 132.3 353.725	FAYETTEVILLE APP CON 125.175 285.575 (271° - 090°) 133.0 290.25 (091° - 270°)		TOWER 135.025 291.1	GND CON 124.55 275.8	CLNC DEL 124.55 275.8



SE-2, 07 AUG 2025 to 04 SEP 2025

EMERG SAFE ALT 100 NM 5300

