

WAAS	APCH CRS	Rwy Idg
Chan 52202	228°	TDZE 200
W23A		Arprt Elev 225

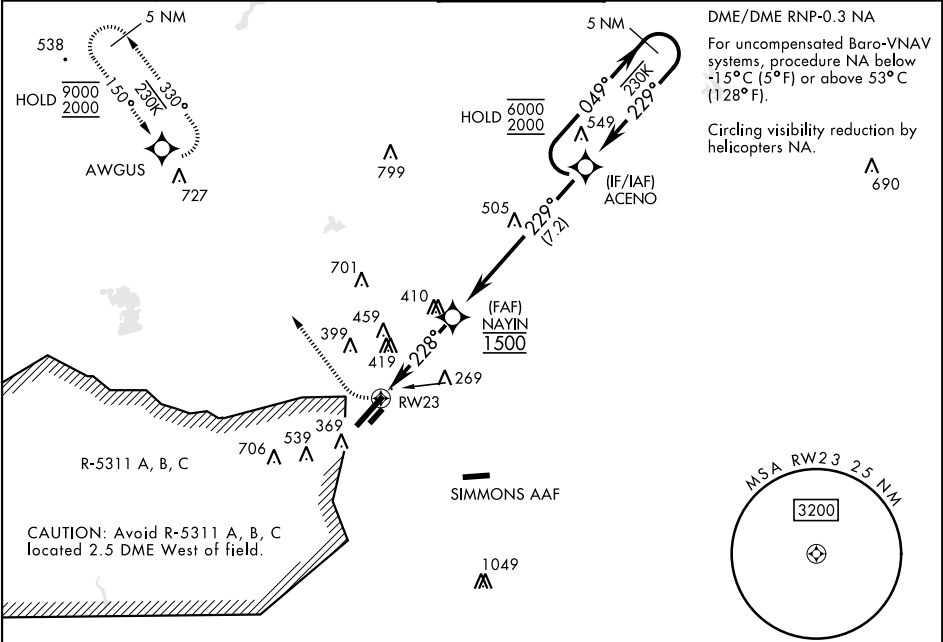
RNAV (GPS) RWY 23

[USAF]

POPE AAF (KPOB)

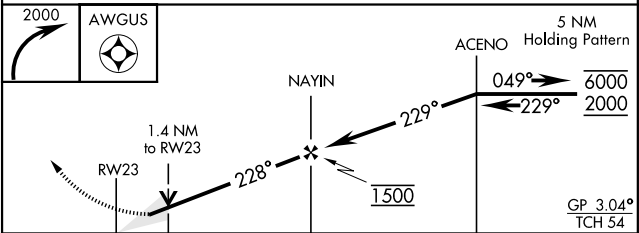
RADAR required		<div>ALSF-1</div> <div></div>	MISSED APPROACH: Climbing right turn to 2000 direct AWGUS and hold.
<div></div>	<div>*When ALS inop, increase RVR to 40 vis to ¾ mile.</div> <div>**When ALS inop, increase vis to 1¼ mile.</div> <div>***When ALS inop, increase CAT AB RVR to 55 and vis to 1 mile; CAT CD vis to 1⅜ miles.</div> <div>****Circling not authorized SE of Rwy 5-23.</div>		

ATIS 132.3 353.725	FAYETTEVILLE APP CON 125.175 285.575 (271° - 090°) 133.0 290.25 (091° - 270°)	TOWER 135.025 291.1	GND CON 124.55 275.8	CLNC DEL 124.55 275.8
------------------------------	---	-------------------------------	--------------------------------	---------------------------------

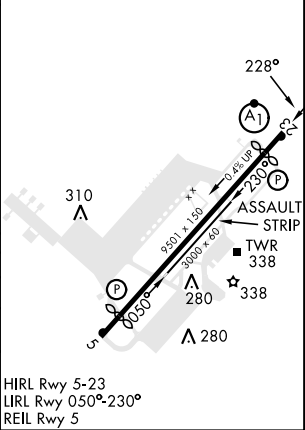


EMERG SAFE ALT 100 NM 5300

ELEV 225	TDZE 200
----------	----------



CATEGORY	A	B	C	D
LPV DA *	400/24		200	(200-1/2)
LNAV/ **	572/40		372	(400-3/4)
VNAV DA				
***	720/24	520 (600-1/2)	720/55	520 (600-1)
****	760-1	542 (600-1)	920-2	1060-2 3/4
CIRCLING			702 (800-2)	842 (900-2 3/4)



RNAV (GPS) RWY 23

SE-2, 07 AUG 2025 to 04 SEP 2025

SE-2, 07 AUG 2025 to 04 SEP 2025