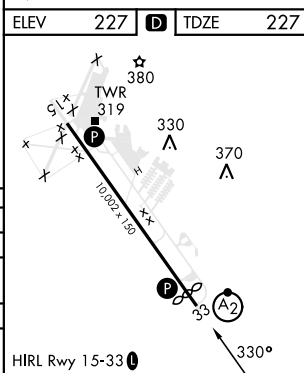
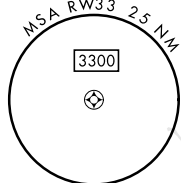


LAWSON AAF (KLSF)

V * When ALS inop, increase vis to 1 $\frac{3}{4}$ mile.
 ** When ALS inop, increase CAT AB RVR to 55, vis to 1 mile; CAT CD vis to 1 $\frac{3}{4}$ miles.
 *** Circling not authorized NE of Rwy 15-33. Not authorized when tower closed.

MISSED APPROACH: Climb to 800 then climbing left turn to 3000 direct RENFO and hold.

For uncompensated Baro-VNAV systems,
LNAV/VNAV below -15°C or above 54°C.



CATEGORY	A	B	C	D
LPV DA	427/40	200	(200-¾)	
LNAY/DA*	701/60	474	(500-1½)	
LNAY MDA**	740/40 513 (600-¾)		740-1¼ 513 (600-1¼)	
CIRCLING***	820-1 593 (600-1)	860-1 633 (700-1)	960-2 733 (800-2)	1080-2¾ 853 (900-2¾)

SE-4, 07 AUG 2025 to 04 SEP 2025