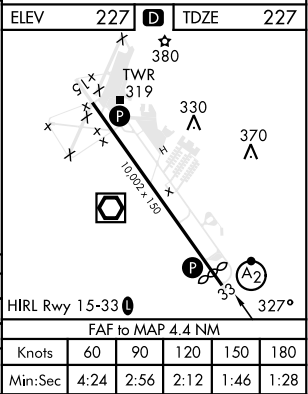
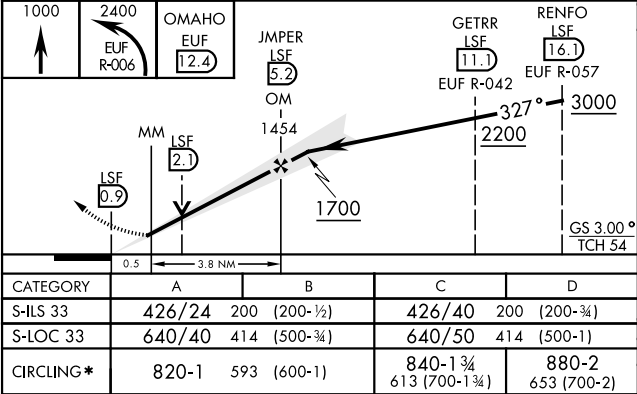
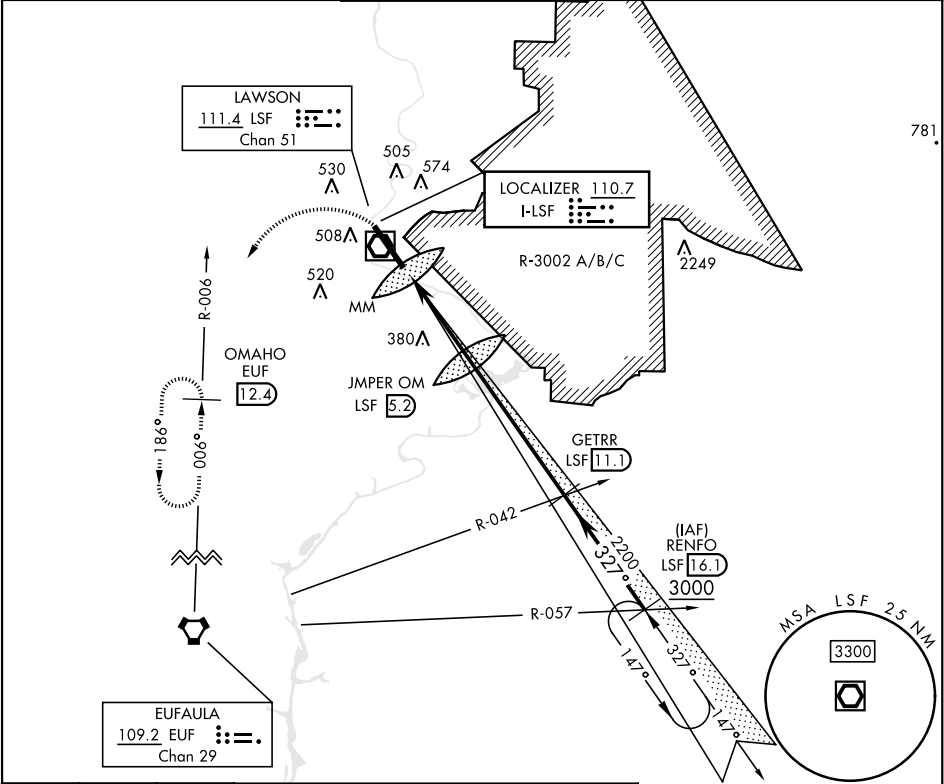


ILS or LOC RWY 33

LOC I-LSF 110.7	APCH CRS 327°	Rwy Idg TDZE Arpt Elev 9302 227 227	[USA]	LAWSON AAF (KLSF)
* Circling not authorized E of Rwy 15-33. Not authorized when tower closed.			SALSF A2	MISSED APPROACH: Climb to 1000 then climbing left turn to 2400 via EUF R-006 to OMAHO INT/EUF 12.4 DME and hold.
ATIS★ 134.375	ATLANTA APP CON 125.5 323.1	TOWER★ 119.05 (CTAF) 269.525	GND CON 121.7 254.25	CLNC DEL 121.7 251.15



ILS or LOC RWY 33

SE-4, 07 AUG 2025 to 04 SEP 2025

SE-4, 07 AUG 2025 to 04 SEP 2025