

LOC/DME I-FLO

109.1

Chan 28

APP CRS

093°

Rwy Ldg

6502

TDZE

147

Apt Elev

147

ILS or LOC RWY 9

FLORENCE RGNL (FLO)

RNP APCH - GPS.

DME required.

⚠

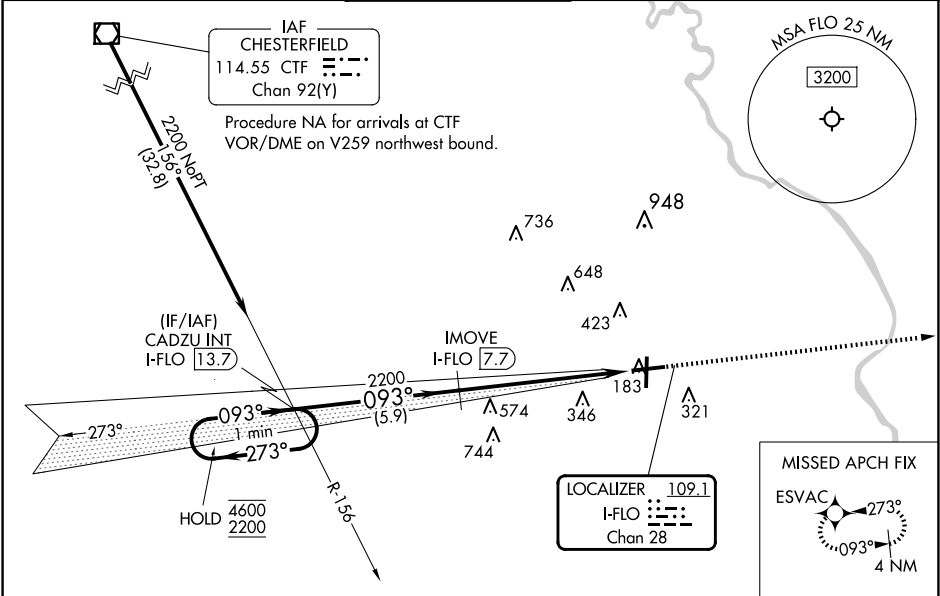
Circling Rwy 1, 19 NA at night. For inop ALS, increase S-LOC 9 Cats C and D visibilities to 2 SM.

MALS R

AS

MISSED APPROACH: Climb to 2000 direct ESVAC and hold.

ATIS	FLORENCE APP CON★	FLORENCE TOWER★	GND CON	CINC DEL	UNICOM
123.625	118.6 341.7 (256°-074°) 135.25 316.15 (075°-255°)	125.1 (CTAF) 353.85	121.9 353.85	121.9 353.85	122.95



ELEV 147

TDZE 147

One Minute Holding Pattern

GS 3.00° TCH 59

4600 2200

273° 093°

2200

5.9 NM 4.2 NM 2.1 NM

2000 ESVAC

TWR 245

253 61

0.4% UP

0.5% 0

6000 X 150

093°

CATEGORY	A	B	C	D
S-ILS 9	347-1/2 200 (200-1/2)			
S-LOC 9	860-1/2 713 (800-1/2)		860-15/8 713 (800-15/8)	
CIRCLING	860-1 713 (800-1)		900-21/4 900-21/2 753 (800-21/4) 753 (800-21/2)	

REIL Rws 1,19 and 27

HIRL Rwy 9-27

MIRL Rwy 1-19

FAF to MAP 6.3 NM

Knots	60	90	120	150	180
Min:Sec	6:18	4:12	3:09	2:31	2:06

SE-2, 07 AUG 2025 to 04 SEP 2025

SE-2, 07 AUG 2025 to 04 SEP 2025