

FARGO, NORTH DAKOTA

AL-144 (FAA)

24193

WAAS CH 65733 W27A	APP CRS 267°	Rwy Idg 6302 TDZE 899 Apt Elev 901
--	------------------------	---

RNAV (GPS) RWY 27
HECTOR INTL (FAR)

RNP APCH.

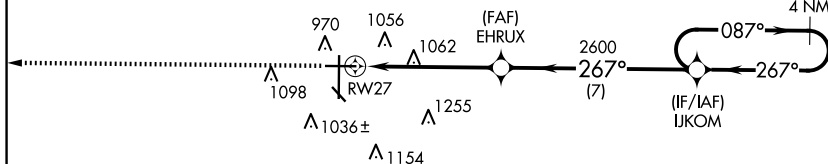
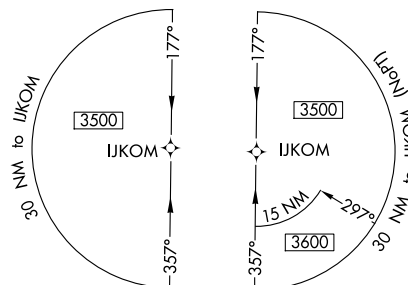
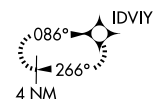


Baro-VNAV NA.
Rwy 27 helicopter visibility reduction below $\frac{3}{4}$ SM NA.

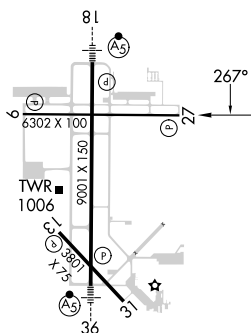
MISSED APPROACH: Climb to 3500 direct IDVIY and hold.

ATIS 124.5 379.2	FARGO APP CON 120.4 377.15	FARGO TOWER 133.8 290.4	GND CON 121.9 348.6	CLNC DEL 121.9 348.6
---------------------	-------------------------------	----------------------------	------------------------	-------------------------

MISSED APCH FIX



ELEV 901	D	TDZE 899
----------	----------	----------

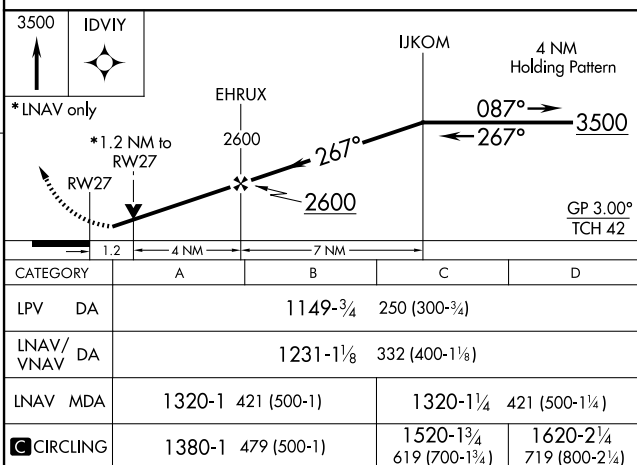


HIRL Rwy 18-36
REIL Rwy 9 and 27
MIRL Rwy 9-27 and 13-31

FARGO, NORTH DAKOTA

Amdt 1C 03JAN19

1637



Amdt 1C 03JAN19

46°55'N-96°49'W

HECTOR INTL (FAR)
RNAV (GPS) RWY 27

NC-1, 07 AUG 2025 to 04 SEP 2025