

WAAS CH 40006 W18A	APP CRS 176°	Rwy Idg 9001 TDZE 900 Apt Elev 901
--	------------------------	---

RNAV (GPS) RWY 18

HECTOR INTL (FAR)

RNP APCH.



For inoperative MALSRS, increase LPV Cat E visibility to RVR 4000 and LNAV/VNAV Cat E and LNAV Cat D and E to RVR 6000. For uncompensated Baro-VNAV systems, LNAV/VNAV NA below -16°C (4°F) or above 47°C (116°F).[†]
[†]RVR 1800 authorized with use of FD or AP or HUD to DA.

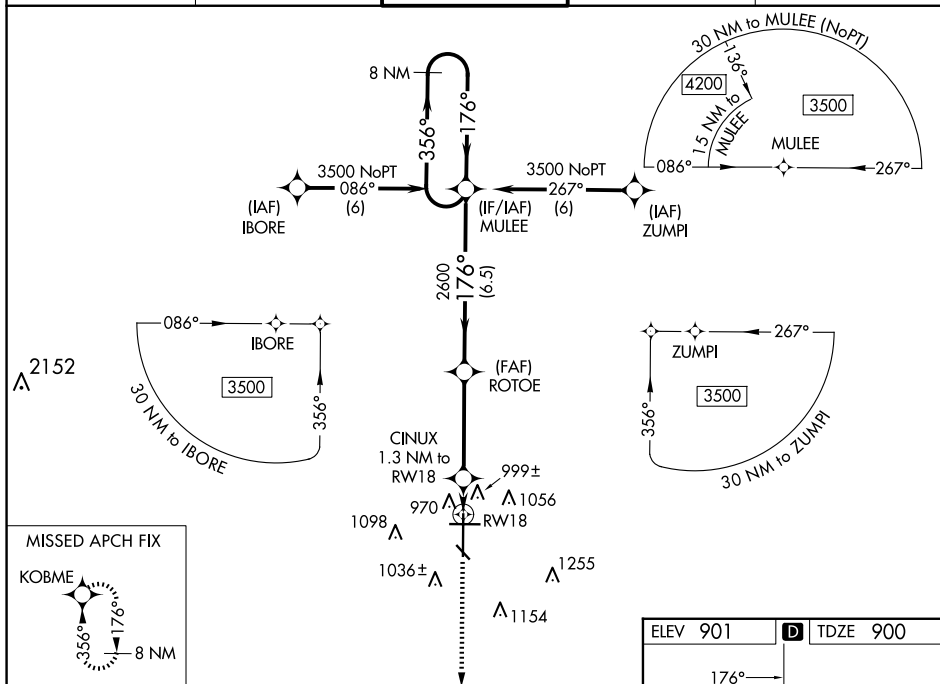
#RVR 1800 authorized with use of FD or AP or HUD to DA.

MALSR

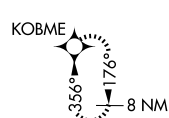


MISSED APPROACH.
Climb to 3500 direct
KOBME and hold.

ATIS 124.5 379.2	FARGO APP CON 120.4 377.15	FARGO TOWER 133.8 290.4	GND CON 121.9 348.6	CLNC DEL 121.9 348.6
---------------------	-------------------------------	----------------------------	------------------------	-------------------------



MISSED APCH FIX



VGSI and RNAV glidepath not coincident (VGSI Angle 3.00/TCH 68).

3.500	KORBME
-------	--------

SSSS ROBTME

[illegible]

* LNAV only.

RW18

NM →

	E
--	---

360 (400-1)

	1420-21/4
--	-----------

1	1820-2 1/2
1/4)	718 (700-2 1/4)

7/4/717 (700-272)

2

W R

FARGO, NORTH DAKOTA

Amdt 1C 03JAN19

46°55'N-96°49'W

HECTOR INTL (FAR)

RNAV (GPS) RWY 18