

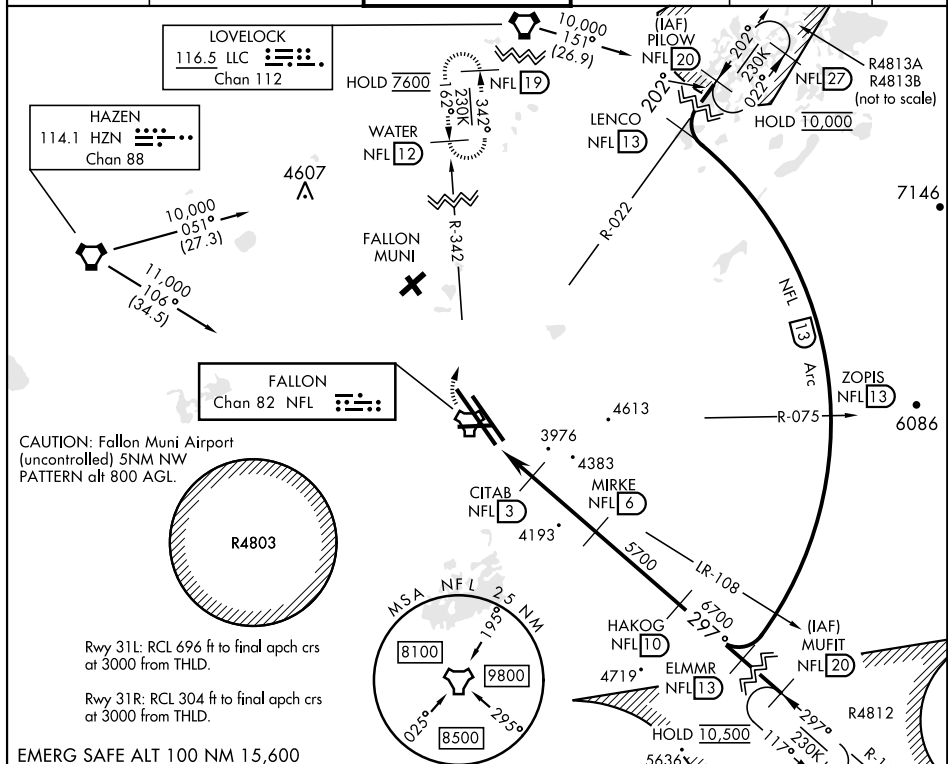
FALLON, NEVADA

TACAN Y RWY 31L/R

TACAN NFL	APCH CRS	Rwy Idg	31L <b>14,001</b>	31R <b>11,076</b>
Chan <b>82</b>	<b>297°</b>	TDZE	31L <b>3927</b>	31R <b>3928</b>
		Arpt Elev	<b>3935</b>	

[USN] FALLON NAS (VAN VOORHIS FLD) (KNFL)

T			MISSED APPROACH: Climb direct NFL TACAN, then climbing right turn to 7600. Intercept NFL R-342 outbound to WATER and hold. Continue climb-in-hold to 7600.		
	ATIS ★ <b>370.925</b>	NAVY FALLON APP CON <b>120.85 360.2</b>	NAVY FALLON TOWER ★ <b>119.25 340.2</b>	GND CON <b>251.15</b>	CLNC DEL <b>353.55</b>
			ASR/PAR		



SW-4, 07 AUG 2025 to 04 SEP 2025

CATEGORY	A	B	C	D
S-31L	4240-1	313	(400-1)	
S-31R	4240-1	312	(400-1)	
<b>C</b> CIRCLING	4400-1	465 (500-1)	4700-2½ 765 (800-2½)	4920-3 985 (1000-3)

Diagram on the right: 3D profile view of a runway with a 29.7° angle and a 7002 x 154 ft dimension. The diagram also shows a 3D profile view of a runway with a 29.7° angle and a 7002 x 154 ft dimension.

FALLON, NEVADA  
Amdt 3 19MAY22

39° 25' N-118° 42' W FALLON NAS (VAN VOORHIS FLD) (KNFL)

TACAN Y RWY 31L/R