

FALLON, NEVADA

TACAN Y RWY 13R

TACAN NFL Chan <b>82</b>	APCH CRS <b>141°</b>	Rwy Idg <b>14,001</b> TDZE <b>3935</b> Arpt Elev <b>3935</b>
-----------------------------	-------------------------	--------------------------------------------------------------------

[USN]

FALLON NAS (VAN VOORHIS FLD) (KNFL)

**MISSED APPROACH:** Climb direct NFL TACAN, then climbing left turn to 10,500. Intercept NFL R-117 outbound to MUFIT and hold. Continue climb-in-hold to 10,500.

ATIS ★ 370.925	NAVY FALLON APP CON 120.85 360.2	NAVY FALLON TOWER★ 119.25 340.2	GND CON 251.15	CLNC DEL 353.55	ASR/PAR
-------------------	-------------------------------------	------------------------------------	-------------------	--------------------	---------

Knots	60	120	180	240	300	360
V/V(fpm)	205	410	615	820	1025	1230


\*Min climb of 205 ft/NM to 8600 - Controlling Obstacle Unk

**CAUTION:**  
Fallon Muni Airport  
(uncontrolled) 5 NM NW  
PATTERN alt 800' AGL

CAUTION:  
RCL 91' from FAC at 3000'  
from threshold.

LOVELOCK  
116.5 LLC   
Chan 112

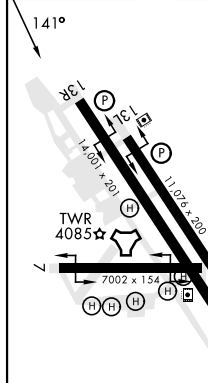
10,200  
051  
(27.3)

HAZEN  
114.1 HZN   
Chan 88

FALLON  
Chan 82 NFL

EMERG SAFE ALT 100 NM 15,600

ELEV	3935	TDZE	3935
------	------	------	------



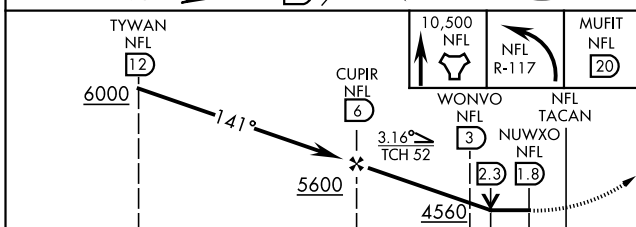
H|RL all rwys


FALLON, NEVADA

Amdt 3 19MAY22

39°25'N-118°42'W FALLON NAS (VAN VOORHIS FLD) (KNFL)

TACAN Y RWY 13R



CATEGORY	A	B	C	D
S-13R *	4340-1	405 (500-1)	4340-1 $\frac{1}{8}$	405 (500-1 $\frac{1}{8}$ )
S-13R	4440-1	505 (600-1)	4440-1 $\frac{3}{8}$	505 (600-1 $\frac{3}{8}$ )
 CIRCLING	4400-1	465 (500-1)	4700-2 $\frac{1}{4}$ 765 (800-2 $\frac{1}{4}$ )	4920-3 985 (1000-3)

SW-4, 07 AUG 2025 to 04 SEP 2025