

WAAS CH 61129 W16A	APP CRS 163°	Rwy Ldg TDZE Apt Elev	9010 570 608
--	------------------------	-----------------------------	---

RNAV (GPS) Z RWY 16R

SEATTLE PAINE FLD INTL (P.A.E)

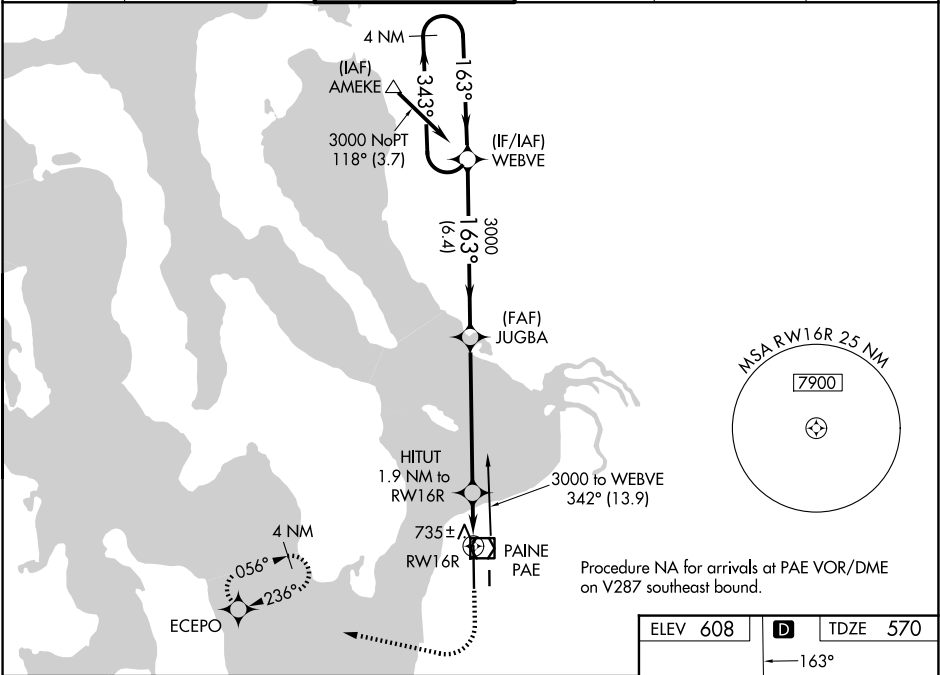
▼

For uncompensated Baro-VNAV systems, LNAV/VNAV NA below -5°C (23°F) or above 54°C (130°F). Circling Rwy 34R NA at night. DME/DME RNP-0.3 NA.

MALSR

MISSED APPROACH: (Do not exceed 240K until ECEPO) Climb to 1100 then climbing right turn to 3000 direct ECEPO and hold, continue climb-in-hold to 3000.

ATIS 128.65	SEATTLE APP CON 128.5 306.9	PAINE TOWER ★ 132.95 (CTAF) 0 256.7	GND CON 121.8 339.8	CLNC DEL 127.175	UNICOM 122.95
-----------------------	---------------------------------------	---	-------------------------------	----------------------------	-------------------------



VGSI and RNAV glidepath not coincident (VGSI Angle 3.00/TCH 74).

4 NM Holding Pattern

WEBVE

JUGBA

HITUT

1.9 NM to RW16R

*1.1 NM to RW16R

RW16R

GP 3.00° TCH 57

3000

3000

3000

163°

343°

163°

163°

6.4 NM

5.6 NM

0.8 NM

1.1 NM

*1220

*LNAV only

ECEPO

CATEGORY	A	B	C	D
LPV DA	770/18 200 (200-½)			
LNAV/VNAV DA	913/30 343 (400-⅝)			
LNAV MDA	1000/24 430 (400-½)	1000/40 430 (400-¾)		
CIRCLING	1100-1 492 (500-1)	1120-1½ 512 (600-1½)	1160-2 552 (600-2)	

ELEV 608

D

TDZE 570

163°

89L

3000 X 75

19L

34R

34L

TWR

TDZ/CL Rwy 16R

HIRL Rwy 16R-34L

REIL Rwys 16L and 34R

MIRL Rwy 16L-34R