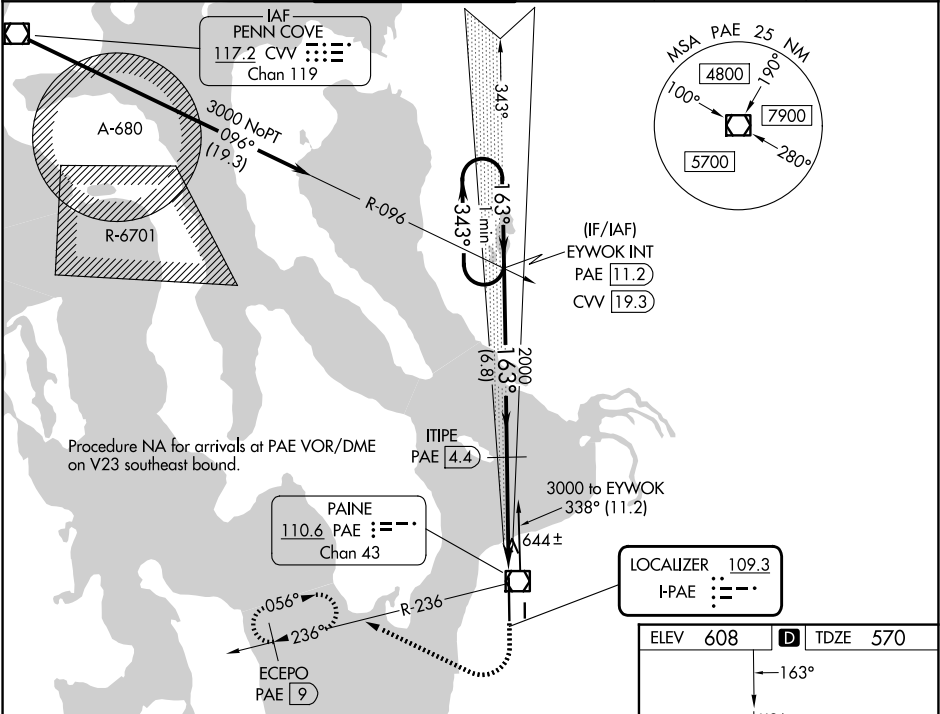


LOC I-PAE 109.3	APP CRS 163°	Rwy Ldg TDZE Apt Elev 9010 570 608
---------------------------	------------------------	--

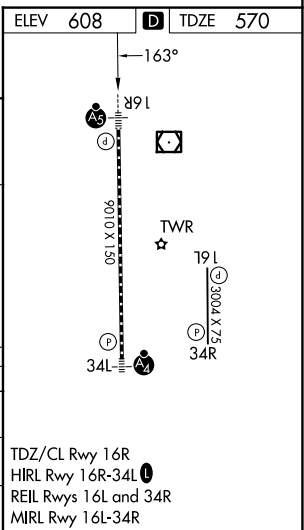
ILS Y or LOC Y RWY 16R
SEATTLE PAINE FLD INTL (PAE)

<div><div>▼</div><div>▲</div></div> <div>Circling Rwy 34R NA at night. DME required. DME from PAE VOR/DME. Simultaneous reception of I-PAE and PAE DME required.</div>	<div><div>MAISR</div><div></div></div> <div>MISSED APPROACH: Climb to 1100 then climbing right turn to 2000 on heading 280° and PAE VOR/DME R-236 to ECEPO/PAE 9 DME and hold.</div>
--	--

ATIS 128.65	SEATTLE APP CON 128.5 306.9	PAINE TOWER ★ 132.95 (CTAF) 0 256.7	GND CON 121.8 339.8	CLNC DEL 127.175	UNICOM 122.95
-----------------------	---------------------------------------	---	-------------------------------	----------------------------	-------------------------



VGSI and ILS glidepath not coincident (VGSI Angle 3.00/TCH 74).				
One Minute Holding Pattern	EYWOK INT PAE 11.2 CVV 19.3		1100 ↑	2000 hdg 280°
			PAE R-236	ECEPO PAE 9
3000 ← 343° 163° →	ITIPE PAE 4.4		PAE 0.3	
	2000			
GS 3.00° TCH 57				
6.8 NM 4.3 NM				
CATEGORY	A	B	C	D
S-ILS 16R	770/18	200 (200-½)	NA	
S-LOC 16R	940/24	370 (400-½)	NA	
CIRCLING	1100-1	492 (500-1)	NA	



NW-1, 07 AUG 2025 to 04 SEP 2025

NW-1, 07 AUG 2025 to 04 SEP 2025