

NW-1, 07 AUG 2025 to 04 SEP 2025

SEATTLE APP CON
128.5 306.9
ATIS
128.65

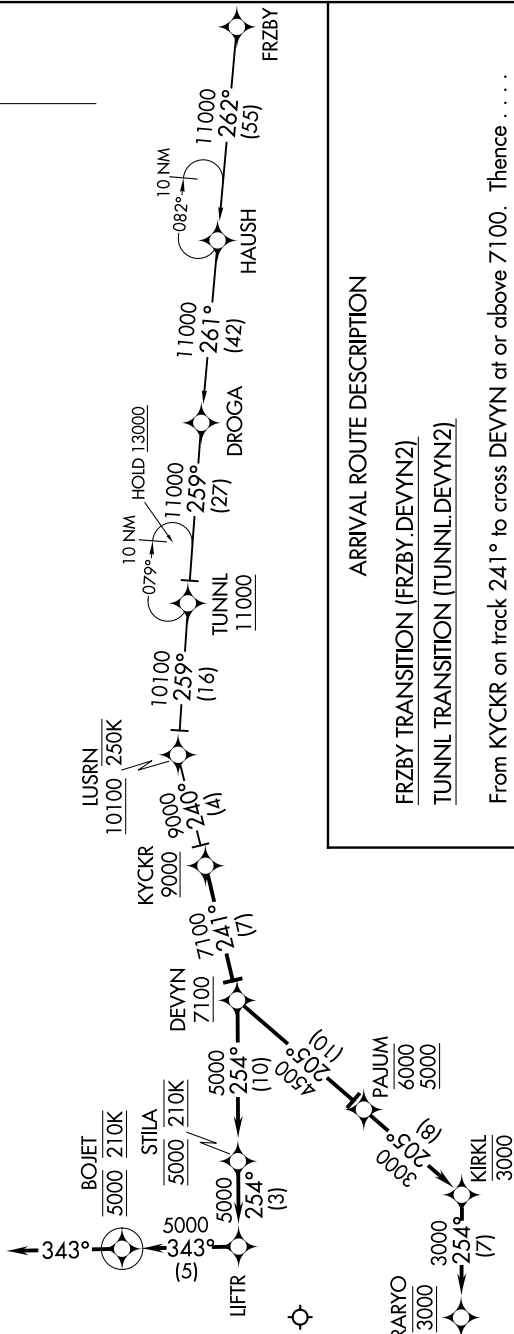
NOTE: RADAR required.

NOTE: RNAV 1.

NOTE: DME/DME/IRU or GPS required.

NOTE: FRZBY TRANSITION: For non-GPS equipped aircraft, MWH, GEG and OLM DMEs must be operational.

NOTE: TUNNL TRANSITION ATC assigned only.



ARRIVAL ROUTE DESCRIPTION

FRZBY TRANSITION (FRZBY.DEVYN2)

TUNN1 TRANSITION (TUNN1.DEVYN2)

From KYCKR on track 241° to cross DEVYN at or above 7100. Thence

LANDING RUNWAY 16R: From DEVYN on track 254° to cross STILA at 5000 and at 210K, then on track 254° to UFTF, then on track 343° to cross BOJET at 5000 and at 210K, then on heading 343° or as assigned by ATC. Expect RADAR vectors to final approach course

LANDING RUNWAY 34L: From DEVYN on track 205° to cross PAJUM between 5000 and 6000, then on track 205° to cross KIRKL at 3000, then on track 254° to cross RARYO at 3000. Expect RNAV (GPS) RWY 34L approach.

NOTE: Chart not to scale.

NW-1, 07 AUG 2025 to 04 SEP 2025

DEVYN TWO ARRIVAL (RNAV)

(KYCKR.DEVYN2) 07DEC17

EVERETT, WASHINGTON
SEATTLE PAINE FLD INTL (PAE)