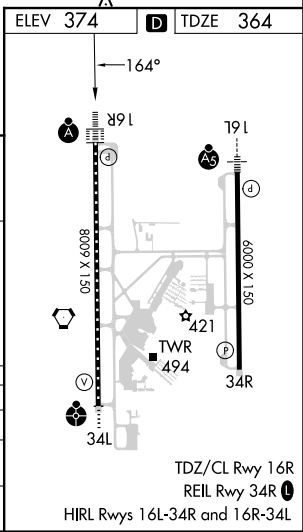
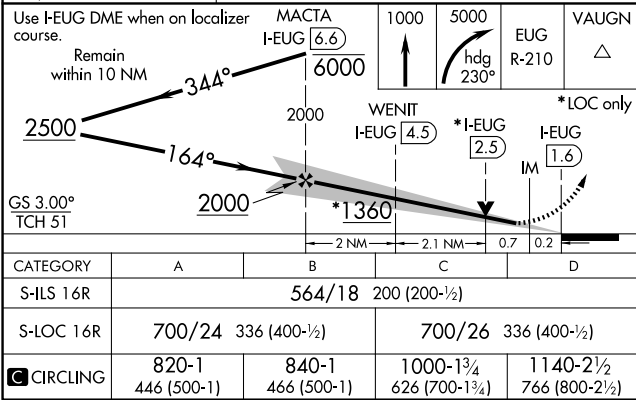
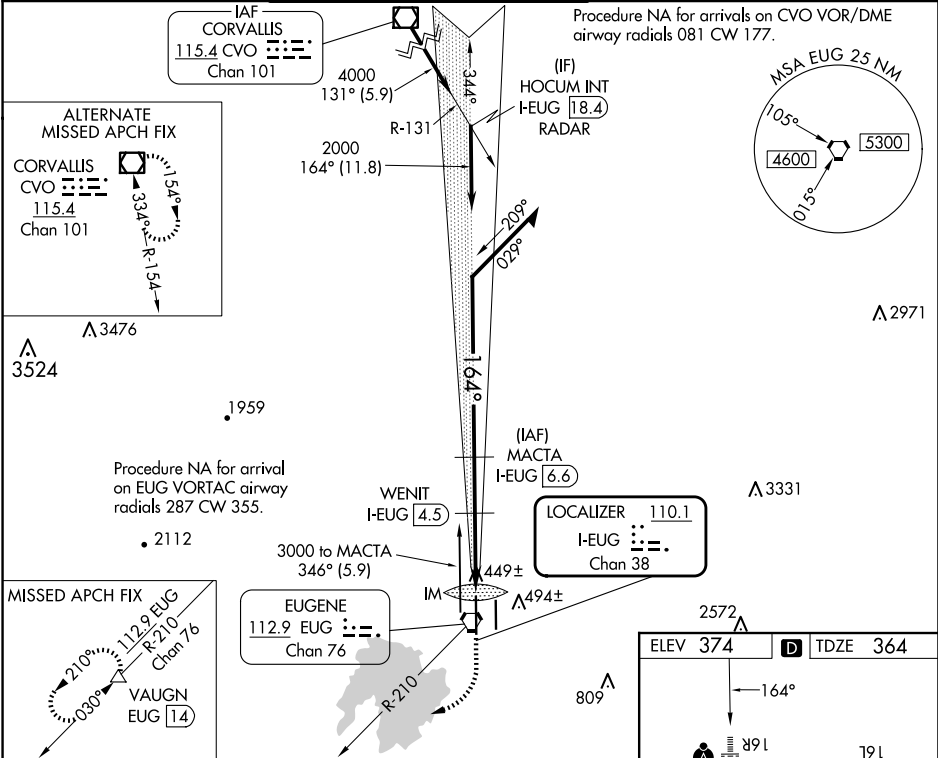


LOC/DME I-EUG 110.1 Chan 38	APP CRS 164°	Rwy Idg 8009 TDZE 364 Apt Elev 374
---	------------------------	---

ILS or LOC RWY 16R
MAHLON SWEET FLD (EUG)

DME required.	ALS-F-2	MISSED APPROACH: Climb to 1000 then climbing right turn to 5000 on heading 230° and on EUG VORTAC R-210 to VAUGN/EUG 14 DME and hold, continue climb-in-hold to 5000.
Simultaneous approach authorized.		

ATIS 125.225	CASCADE APP CON ★ 119.6 348.7	EUGENE TOWER ★ 118.9 (CTAF) 371.9 (Rwy 16R/34L) 124.15 371.9 (Rwy 16L/34R)	GND CON 121.7 269.5	CLNC DEL 121.7 269.5	UNICOM 122.95
------------------------	---	---	-------------------------------	--------------------------------	-------------------------



NW-1, 07 AUG 2025 to 04 SEP 2025

NW-1, 07 AUG 2025 to 04 SEP 2025