

LOC/DME I-ERI
110.3
Chan **40**

APP CRS
064°

Rwy Ldg **7501**
TDZE **732**
Apt Elev **732**

ILS or LOC RWY 6

ERIE INTL/TOM RIDGE FLD (ERI)

DME required. RADAR required for procedure entry. RNP APCH - GPS.

▼

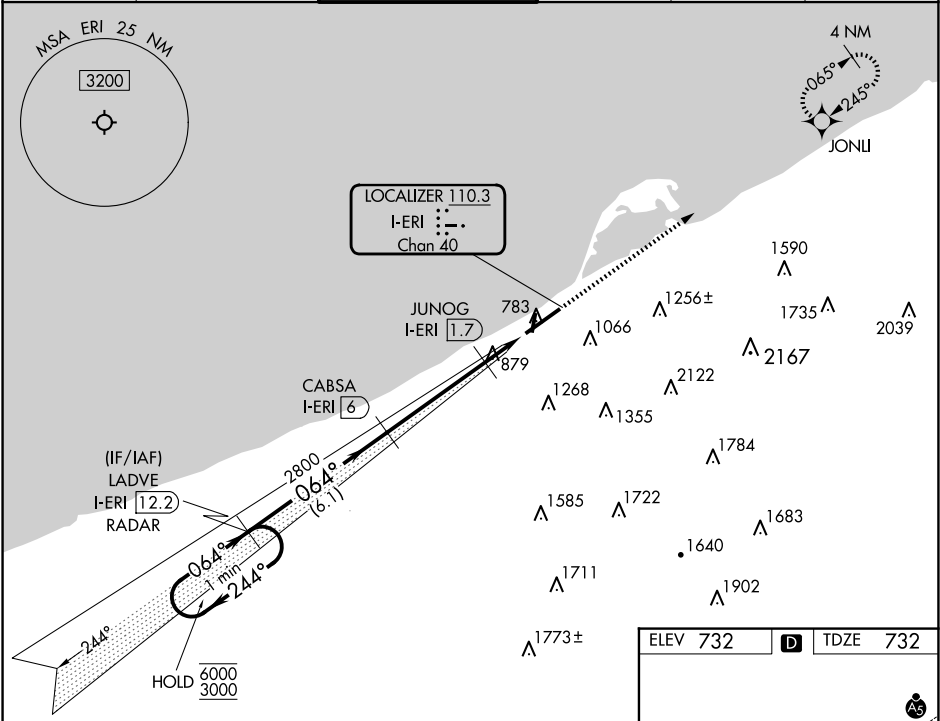
▲

Circling to Rwy 2, 20 NA at night. Circling NA southeast of Rwy 6-24. Autopilot coupled approach NA below 1580. For inop ALS, increase S-LOC 6 Cats C and D visibility to RVR 6000.

MALSR

MISSED APPROACH:
Climb to 3200 direct JONLI and hold.

ATIS 120.35	BUFFALO APP CON★ 121.0 257.8	ERIE TOWER★ 118.1 (CTAF) 0 257.8	GND CON 121.9	CLNC DEL 126.8	UNICOM 122.95
-----------------------	--	--	-------------------------	--------------------------	-------------------------



Use I-ERI DME when on the localizer course.

3200 JONLI

One Minute Holding Pattern

LADVE I-ERI 12.2 RADAR

CABSA I-ERI 6

6000 3000 244° 064° 064°

GS 3.00° TCH 55

2800 1420

JUNOG I-ERI 1.7

I-ERI DME ANTENNA

I-ERI 0.8

I-ERI 0.3

6.1 NM 4.3 NM 0.9 NM 1.1 NM

CATEGORY	A	B	C	D
S-ILS 6	982/24 250 (300-1/2)			
S-LOC 6	1140/24 408 (500-1/2)	1140/40 408 (500-3/4)		
◼ CIRCLING	1160-1 428 (500-1)	1200-1 468 (500-1)	1200-1 1/2 468 (500-1/2)	1340-2 608 (700-2)

HIRL Rwy 6-24 1

MIRL Rwy 2-20 1