

VORTAC EPH <u>112.6</u> Chan 73	APP CRS 202°	Rwy Ldg 5500 TDZE 1276 Apt Elev 1276
---------------------------------------	------------------------	---

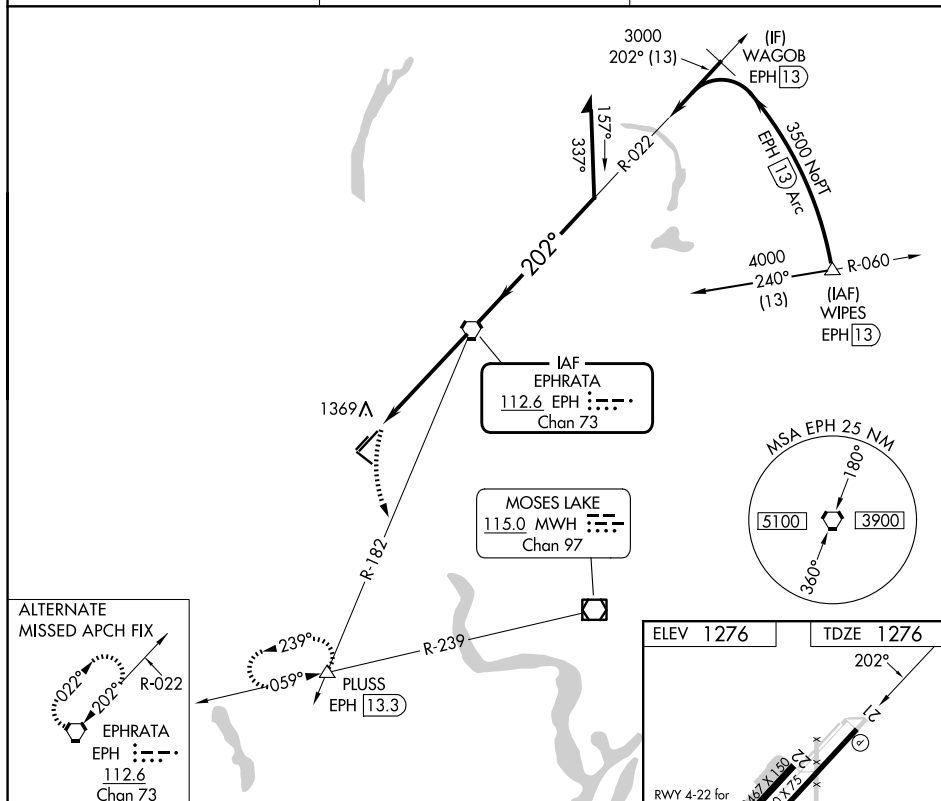
VOR RWY 21
EPHRATA MUNI (EPH)

T When local altimeter setting not received, use Moses Lake/Grant County Intl altimeter setting and increase all MDA 40 feet, increase S-21 Cat D visibility ¼ mile. VDP NA when using Moses Lake/Grant County Intl altimeter setting.

A Final approach from EPH WORTAC holding pattern not authorized. Procedure turn required. Circling NA for Cats B, C and D northwest of Rwy 03-21.

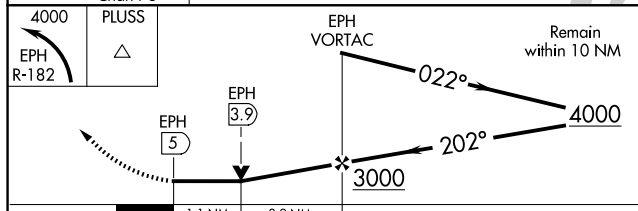
MISSED APPROACH: Climbing left turn to 4000 via EPH R-182 to PLUSS INT/EPH 13.3 DME and hold. Continue climb-in-hold to 4000.

ASOS 135.775	GRANT COUNTY APP CON* 126.4 379.95	UNICOM 122.8 (CTAF) ①
------------------------	--	---------------------------------



ALTERNATE
MISSED APCH FIX

EPHRATA
EPH
112.6
Chan 73



CATEGORY	A	B	C	D
S-21	1680-1	404 (500-1)	1680-1¼	404 (500-1¼)
CIRCLING	1740-1 464 (500-1)	1740-1 464 (500-1)	1780-1½ 504 (600-1½)	2500-3 1224 (1300-3)

