

WAAS CH <b>50208</b> <b>W03A</b>	APP CRS <b>027°</b>	Rwy Ldg <b>5500</b> TDZE <b>1269</b> Apt Elev <b>1276</b>
--	------------------------	---

RNAV (GPS) RWY 3

EPHRATA MUNI (EPH)

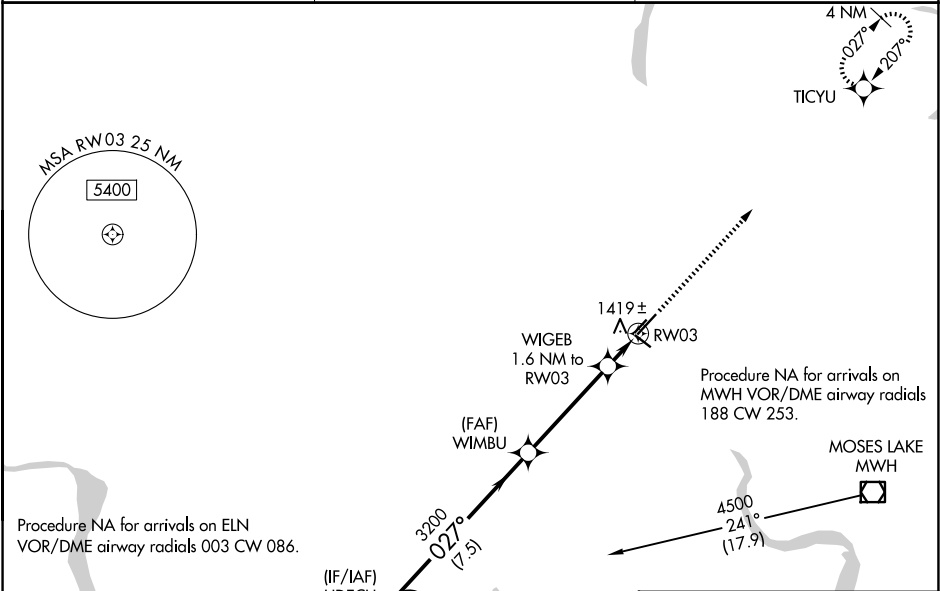
RNP APCH.

⚠

For uncompensated Baro-VNAV systems, LNAV/VNAV NA below -17°C or above 46°C. VDP and Baro-VNAV NA when using Moses Lake/Grant County Intl altimeter setting. When local altimeter setting not received, use Moses Lake/Grant County Intl altimeter setting and increase all DA/MDA 40 feet and LNAV Cat C and D visibility ¼ SM.

MISSED APPROACH: Climb to 3800 direct TICYU and hold.

ASOS <b>135.775</b>	GRANT COUNTY APP CON * <b>126.4 379.95</b>	UNICOM <b>122.8 (CTAF) 0</b>
------------------------	---	---------------------------------



ELLENSBURG ELN		4500 NoPT 061° (7.8)	(IF/IAF) UDECU	3200 027° (7.5)	(FAF) WIMBU	WIGEB 1.6 NM to RW03	1419± RW03	Procedure NA for arrivals on MWH VOR/DME airway radials 188 CW 253.	MOSES LAKE MWH
GP 3.00° TCH 60		5 NM Holding Pattern	UDECU	WIMBU	WIGEB 1.6 NM to RW03	*1 NM to RW03	TICYU		
CATEGORY		A	B	C	D				
LPV DA		1519-1 250 (300-1)							
LNAV/VNAV DA		1689-1½ 420 (500-1½)							
LNAV MDA		1680-1 411 (500-1)	1680-1¼ 411 (500-1¼)						