

WAAS CH 82308 W21A	APP CRS 207°	Rwy Ldg TDZE 1276 Apt Elev 1276
--	------------------------	---

RNAV (GPS) RWY 21

EPHRATA MUNI (EPH)

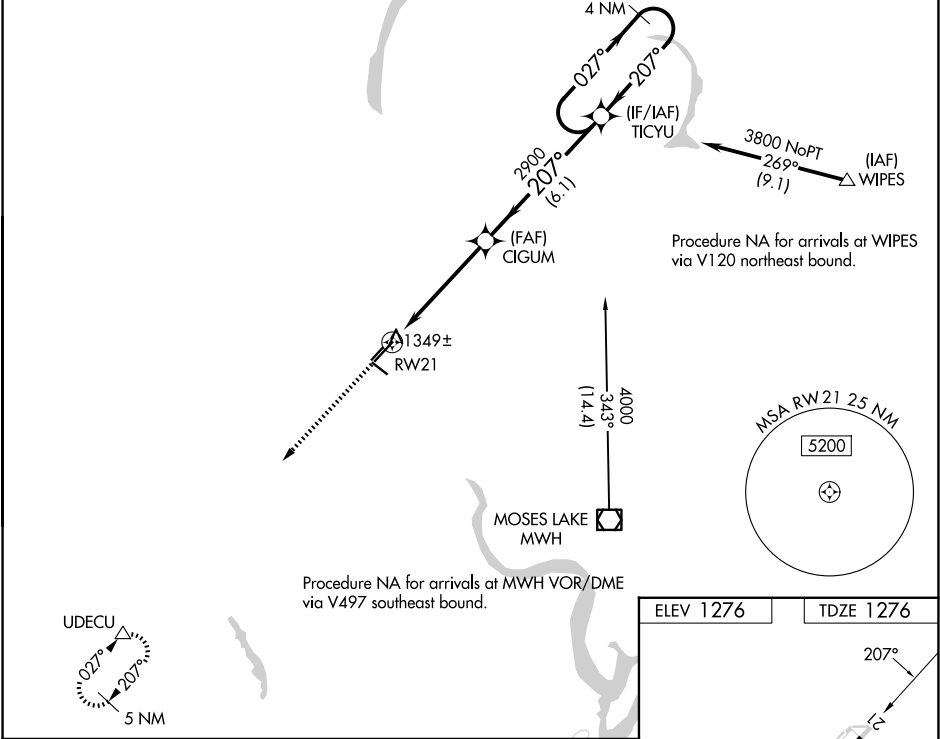
RNP APCH.

⚠

For uncompensated Baro-VNAV systems, LNAV/VNAV NA below -17°C or above 46°C. VDP and Baro-VNAV NA when using Moses Lake/Grant County Intl altimeter setting. When local altimeter setting not received, use Moses Lake/Grant County Intl altimeter setting and increase all DA/MDA 40 feet; increase visibility LPV all Cats, and LNAV Cats C and D ¼ SM.

MISSED APPROACH: Climb to 4500 direct UDECU and hold.

ASOS 135.775	GRANT COUNTY APP CON * 126.4 379.95	UNICOM 122.8 (CTAF) 0
------------------------	---	---------------------------------



4500

UDECU

VGSI and RNAV glidepath not coincident (VGSI Angle 3.00/TCH 40).

CIGUM

TICYU

*LNAV only

*2.2 NM to RW21

2.2 NM

2.7 NM

6.1 NM

4 NM Holding Pattern

027°

207°

3800

2900

GP 3.00°

TCH 51

CATEGORY	A	B	C	D
LPV DA	1526-¾		250 (300-¾)	
LNAV/VNAV DA	2171-4		895 (900-4)	
LNAV MDA	2020-1 744 (800-1)	2020-1¼ 744 (800-1¼)	2020-2¼ 744 (800-2¼)	2020-2½ 744 (800-2½)

ELEV 1276

TDZE 1276

207°

3843 X 160

5500 MSL

0.3% UP

3843 X 40

RWY 4-22 for gliders only

REIL Rwy 3, 11, 21 and 29 0

MIRL Rwy 11-29 and 3-21 0