

WAAS CH 50213 W17A	APP CRS 175°	Rwy Idg 8002 TDZE 1165 Apt Elev 1167
--	------------------------	---

RNAV (GPS) RWY 17
ENID WOODRING RGNL (WDG)

RNP APCH-GPS.

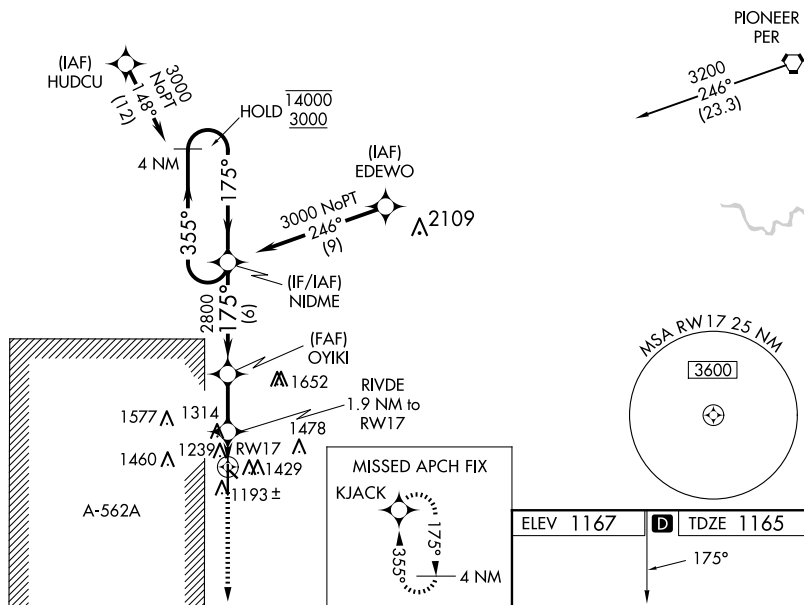


Circling Rwy 13 NA at night. For uncompensated Baro-VNAV systems, LNAV/VNAV NA below -17°C or above 54°C.

MISSED APPROACH: Climb to 3600 direct KJACK and hold.

AWOS-3PT 123.725	VANCE APP CON ★ 121.3 346.325	WOODRING TOWER ★ 118.9 (CTAF) 0 257.95	GND CON 121.925
----------------------------	---	--	---------------------------

Procedure NA for arrival on PER VORTAC
airway radials 173 CW 335.



SC-1, 07 AUG 2025 to 04 SEP 2025

4 NM Holding Pattern NIDME

14000 ← 355°
3000 → 175°

GP 3.00°
TCH 50

175°

2800

OYIKI 2800

RIVDE 1.9 NM to RW17

1.2 NM to RW17

RW17

6 NM 3.1 NM 0.7 1.2

3600 KJACK

CATEGORY		A		B		C		D		E	
LPV	DA			1415-¾		250 (300-¾)					
LNAV/ VNAV	DA			1415-¾		250 (300-¾)					
LNAV	MDA	1580-1	415 (500-1)			1580-1½		415 (500-1½)			
C CIRCLING		1760-1	593 (600-1)			1820-1¾ 653 (700-1¾)	1880-2¼ 713 (800-2¼)			2000-3 833 (900-3)	