

ENID, OKLAHOMA

VOR/DME or TACAN RWY 35L

VORTAC END 115.4 Chan 101	APCH CRS 003°	Rwy Idg 9217 TDZE 1307 Arpt Elev 1307
---	-------------------------	--

[USAF]

VANCE AFB (KEND)

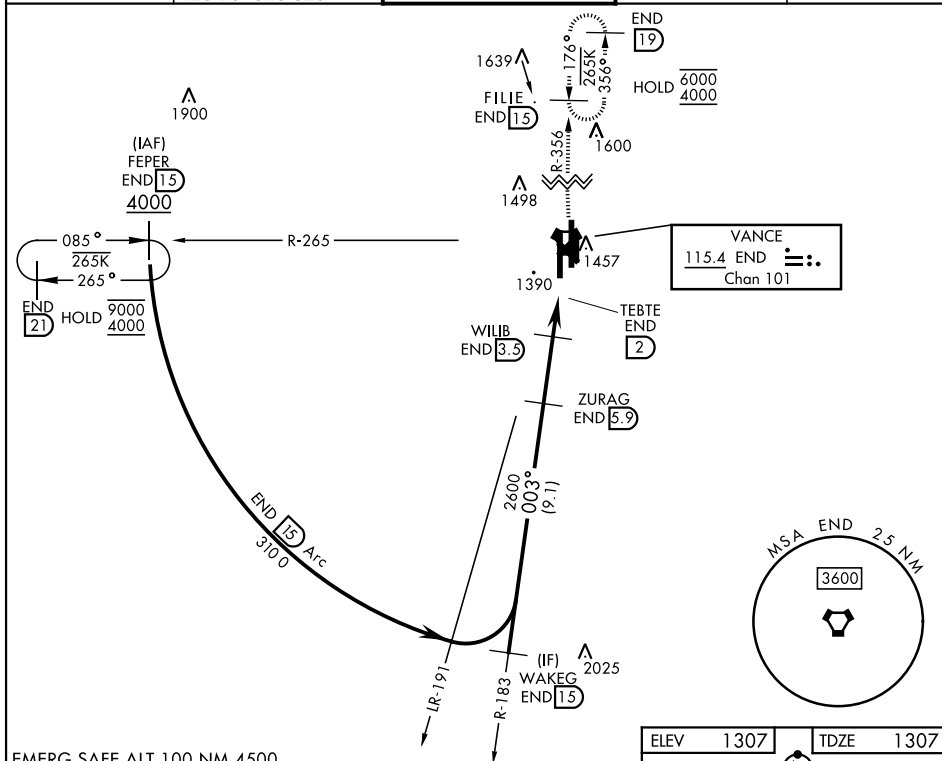
T * When ALS inop, increase vis to 1 mile.

SALS

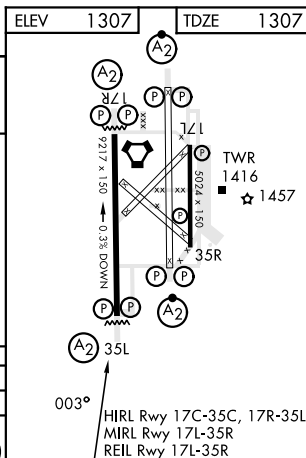
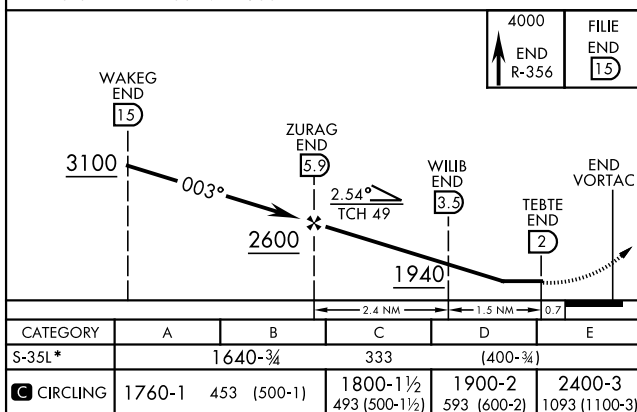
(A₂)

MISSED APPROACH: Climb to 4000, intercept
END VORTAC R-356 to FILE and hold.

ATIS ★ 115.4 263.15	APP CON 125.45 388.2 EAST 126.75 346.325 WEST	TOWER ★ 124.05 259.1	GND CON 121.675 289.4	CLNC DEL 225.4
------------------------	---	-------------------------	--------------------------	-------------------



EMERG SAFE ALT 100 NM 4500



ENID, OKLAHOMA

36° 20' N-97° 55' W

VANCE AFB (KEND)

Amdt 5 12JUN25

VOR/DME or TACAN RWY 35L