

ENID, OKLAHOMA

VOR/DME RWY 35R

VORTAC END 115.4 Chgn 101	APCH CRS 342°	Rwy Idg 5024 TDZE 1284 Arpt Elev 1307
---	-------------------------	--

AL-135 [USAF]

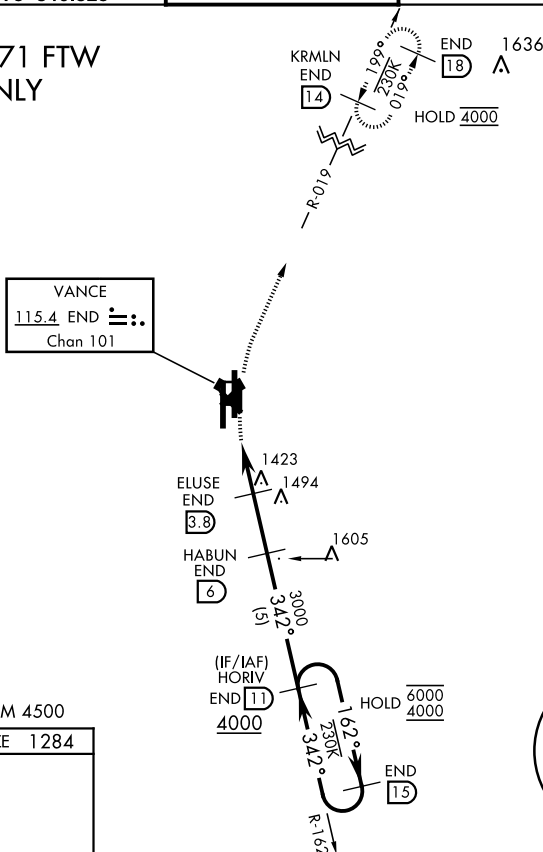
VANCE AFB (KEND)

T Visibility reduction by helicopters NA.

MISSED APPROACH: Climbing right turn to 4000 on heading 005°, intercept END VORTAC R-019 to KRMLN and hold.

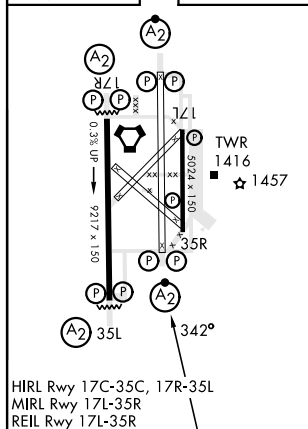
ATIS ★	APP CON	TOWER ★	GND CON	CLNC DEL
115.4 263.15	125.45 388.2 EAST 126.75 346.325 WEST	124.05 259.1	121.675 289.4	225.4



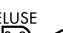
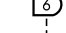
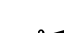
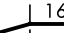
FOR USE BY 71 FTW
ACFT ONLY



EMERG SAFE ALT 100 NM 4500

ELEV	1307		TDZE	1284
------	------	--	------	------



<div>4000</div> <div> hdg 005°</div>		<div>END R-019</div>	<div>KRMLN END 14</div>		VGSI and descent angles not coincident (VGSI Angle 3.00/TCH 50).		
<div>VORTAC</div> <div></div>		<div>FIGTU 1.9</div>	<div>ELUSE 3.8</div> <div></div>	<div>HABUN 6</div> <div></div>	<div>HORIV 11</div> <div></div>	<div>15</div> <div></div>	<div>6000 4000</div>
<div>1.1</div>		<div>1.9 NM</div>	<div>2.2 NM</div>				
CATEGORY	A		B		C		D
S-35R	1720-1 ₃ ⁸		436 (500-1%)				NA
C CIRCLING	1760-1 ₃ ⁶		453 (500-1%)				NA

ENID, OKLAHOMA

36°20'N-97°55'W

VANCE AFB (KEND)

Orig 24MAR22

VOR/DME RWY 35R

SC-1, 07 AUG 2025 to 04 SEP 2025