

VOR/DME RWY 17L

VORTAC END 115.4 Chan 101	APCH CRS 196°	Rwy Idg TDZE 1282 Arpt Elev 1307
---	-------------------------	--

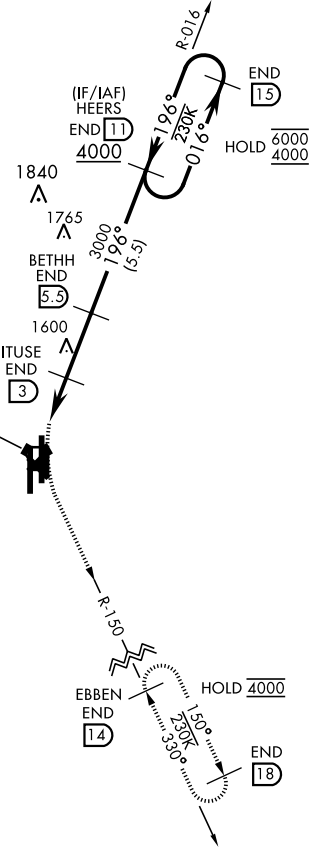
AL-135 [USAF]

VANCE AFB (KEND)

MISSED APPROACH: Climbing left turn to 4000 on heading 165° intercept END VORTAC R-150 to EBBEN and hold.		
ATIS ★ 115.4 263.15	APP CON 125.45 388.2 EAST 126.75 346.325 WEST	TOWER ★ 124.05 259.1
GND CON 121.675 289.4		CLNC DEL 225.4

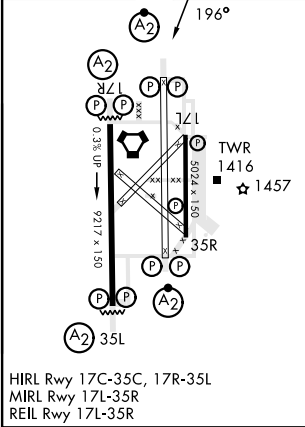
FOR USE BY 71 FTW
ACFT ONLY

VANCE
115.4 END
Chan 101



EMERG SAFE ALT 100 NM 4500

ELEV 1307	TDZE 1282
-----------	-----------



4000 hdg 165°		EBBEN END 14	VGSI and descent angles not coincident (VGSI Angle 3.00/TCH 54).	
VORTAC		ITUSE END 3	BETHH END 5.3	HEERS END 11
1.3		1.5 NM	2.5 NM	
CATEGORY	A	B	C	D
S-17L	1720-1½	438 (500-1½)	NA	
CIRCLING	1760-1½	453 (500-1½)	NA	

VOR/DME RWY 17L