



## RNAV (GPS) Y RWY 35L

APCH CRS <b>003°</b>	Rwy Idg <b>9217</b> THRE <b>1307</b> Arpt Elev <b>1307</b>
-------------------------	--

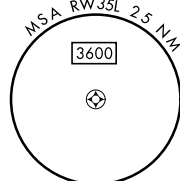
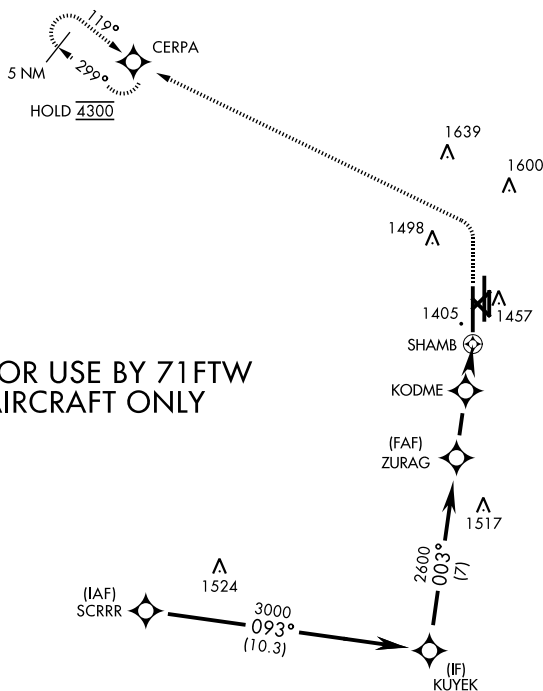
[USAF]

VANCE AFB (KEND)

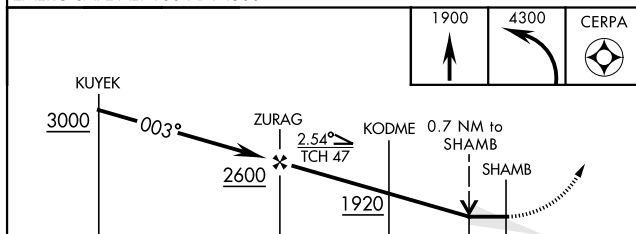
RNP APCH - GPS	SALS	MISSED APPROACH: Climb to 1900, then climbing left turn to 4300 direct CERPA and hold.
RADAR required	 	
<p><b>V</b> * When ALS inop, increase vis to 1 mile.          Circling visibility reduction by helicopters not authorized.</p>		

ATIS ★	APP CON		TOWER ★		GND CON		CLNC DEL
115.4 263.15	125.45	388.2 (E)	124.05	259.1	121.675	289.4	225.4
	126.75	346.325 (W)					

FOR USE BY 71FTW  
AIRCRAFT ONLY



EMERG SAFE ALT 100 NM 4500



			2.4 NM	1.7 NM	0.5 NM	
CATEGORY	A	B	C	D	E	
LNAV MDA *	1660 - 3/4 353 (400 - 3/4)					
<b>C</b> CIRCLING	1760-1 453 (500-1)	1800-1 1/2 493 (500-1 1/2)	1900-2 593 (600-2)	2400-3 1093 (1100-3)		

