

ENID, OKLAHOMA

ILS or LOC RWY 35L

LOC I-JUS <b>111.55</b>	APCH CRS <b>355°</b>	Rwy Idg TDZE Arprt Elev <b>9217</b> <b>1307</b> <b>1307</b>
----------------------------	-------------------------	--

[USAF]

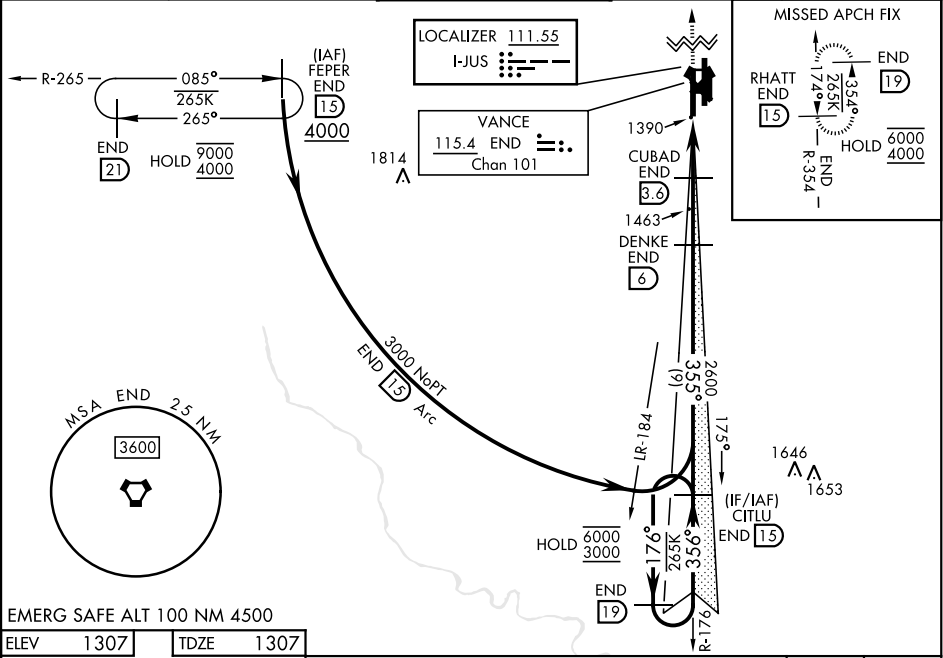
VANCE AFB (KEND)

▼ \*When ALS inop, increase vis to 1 mile.  
\*\*When ALS inop, increase CAT AB vis to 1 mile;  
CAT CDE vis to 1½ mile.

SALS  
(A2)

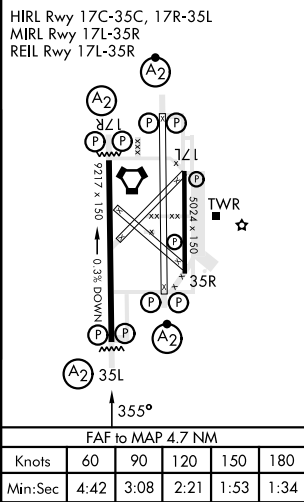
MISSED APPROACH: Climb to 4000, intercept END VORTAC R-354 to RHATT and hold.

ATIS ★ <b>115.4 263.15</b>	APP CON <b>125.45 388.2 EAST</b> <b>126.75 346.325 WEST</b>	TOWER ★ <b>124.05 259.1</b>	GND CON <b>121.675 289.4</b>	CLNC DEL <b>225.4</b>
-------------------------------	---	--------------------------------	---------------------------------	--------------------------



EMERG SAFE ALT 100 NM 4500

ELEV 1307	TDZE 1307
-----------	-----------



--	--	--	--	--

ENID, OKLAHOMA

36°20'N-97°55'W

VANCE AFB (KEND)

Orig 12JUN25

ILS or LOC RWY 35L

SC-1, 07 AUG 2025 to 04 SEP 2025

SC-1, 07 AUG 2025 to 04 SEP 2025