

ILS or LOC RWY 17R

VANCE AFB (KEND)

LOC I-EZQ <b>108.5</b>	APCH CRS <b>175°</b>	Rwy Idg <b>9217</b> TDZE <b>1287</b> Arpt Elev <b>1307</b>
---------------------------	-------------------------	--

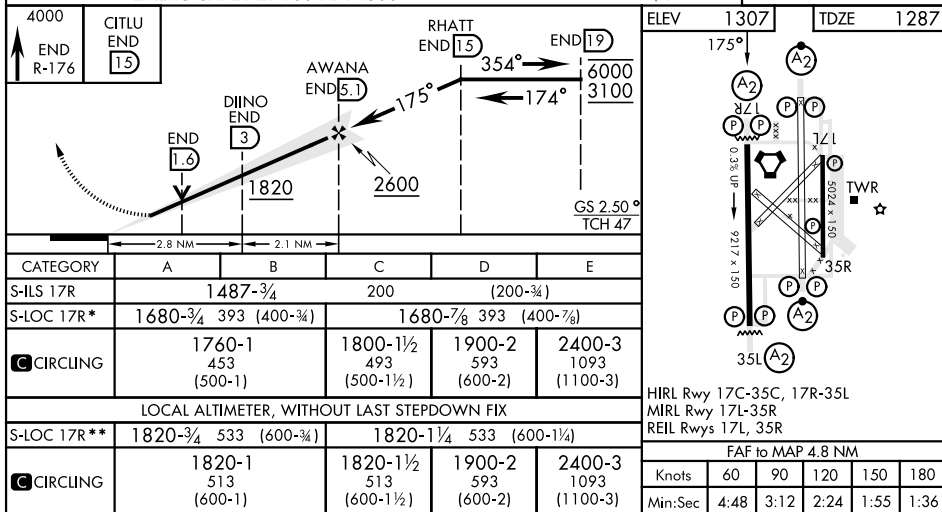
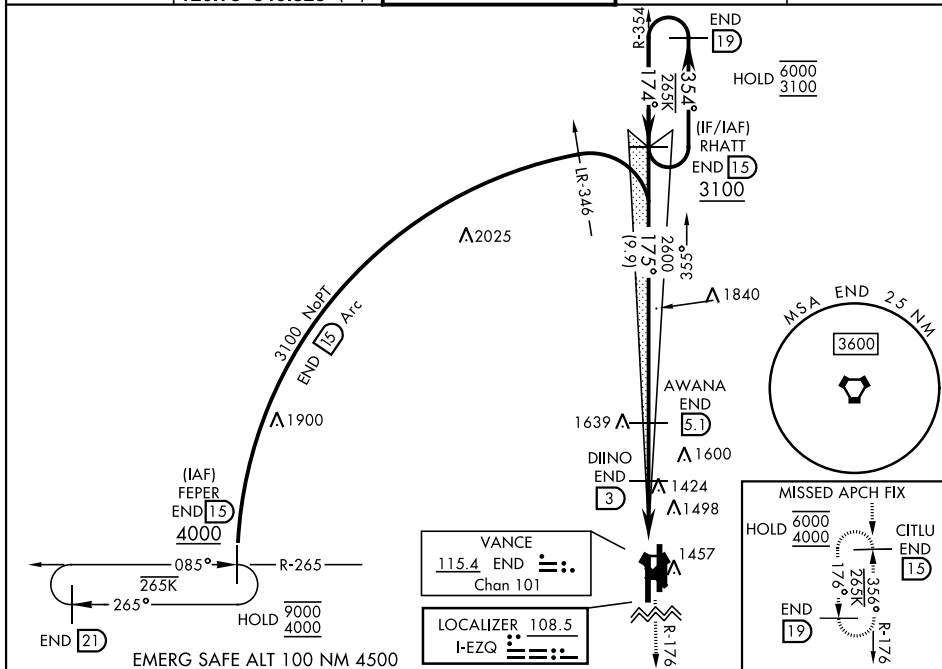
[USAF]

SALS

**MISSED APPROACH:** Climb to 4000, intercept END VORTAC R-176 to CITLU and hold.

\*When ALS inop, increase CAT AB vis to 1 mile; CAT CDE vis to 1½ miles.  
 \*\*When ALS inop, increase CAT AB vis to 1 mile; CAT CDE vis to 1½ miles.

ATIS ★ 115.4 263.15	APP CON 125.45 388.2 (E) 126.75 346.325 (W)	TOWER ★ 124.05 259.1	GND CON 121.675 289.4	CLNC DEL 225.4
------------------------	---	-------------------------	--------------------------	-------------------



END, OKLAHOMA

36°20'N-97°55'W

VANCE AFB (KEND)

Orig 12JUN25

ILS or LOC RWY 17R

SC-1, 07 AUG 2025 to 04 SEP 2025

SC-1, 07 AUG 2025 to 04 SEP 2025